



"Your One Stop Real Estate Shop"

LAND & TIMBER | RESIDENTIAL | COMMERCIAL | OIL & GAS

- \* ONLY \$152,000.00
- \* 40 acres +/- Owner/Broker
- \* DEER! DEER! DEER!
- Location! Location! Location!

## Pure Hunting Tract!!!

Gently Rolling 40 ac +/- Great Hunting!!!

- Owner/Broker
- This is your HAPPY PLACE!
- Beautiful rolling hills w/ Timber
- Mature Hardwoods & Pine
- Utilities & 600' Road Frontage
- Great Hunting (Deer & Turkey)
- Multiple Camp or house-sites
- Address: 9185a Old Port Gibson Rd, Hazlehurst, MS 39083



**Gary W. Stewart, Broker**

**MOBILE: 601-757-3009**

**gwstewart@4cornerprop.com**

**Office: 601-952-2828**

**Fax: 601-510-9446**

**www.4cplandandhomes.com**





## Priced to sell

- Incredible Location for Hunting
- Must See!!!!!!



## Camp/Home Sites

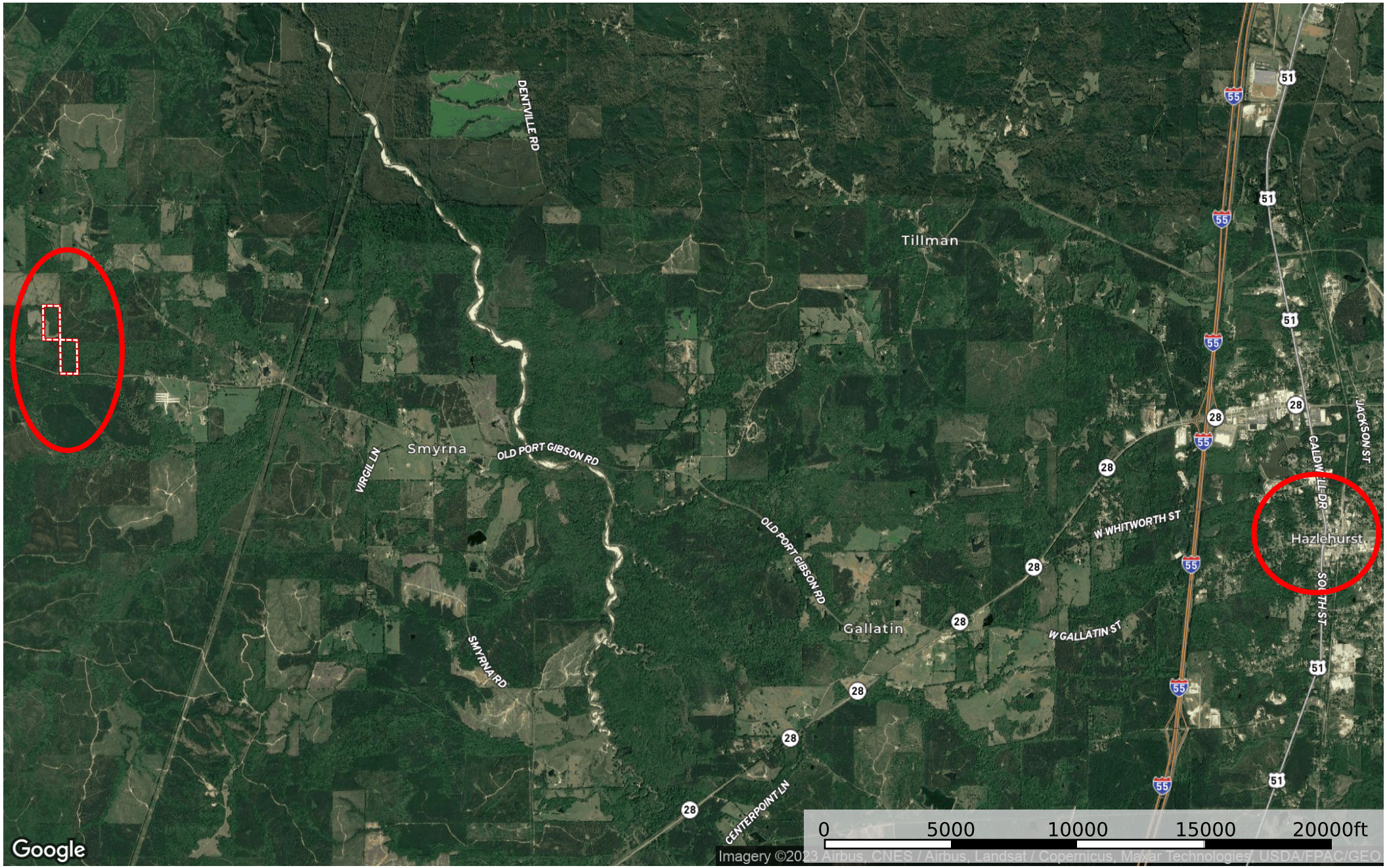
- Great Community
- Abundant Wildlife





# Copiah 40 Owner Broker

Copiah County, Mississippi, 40 AC +/-




Google

Imagery ©2013 Airbus, CNES / Airbus, Landsat / Copernicus, Maxar Technologies, USDA/FPAC/Geo

 Boundary

Gary Stewart  
P: 6017573009

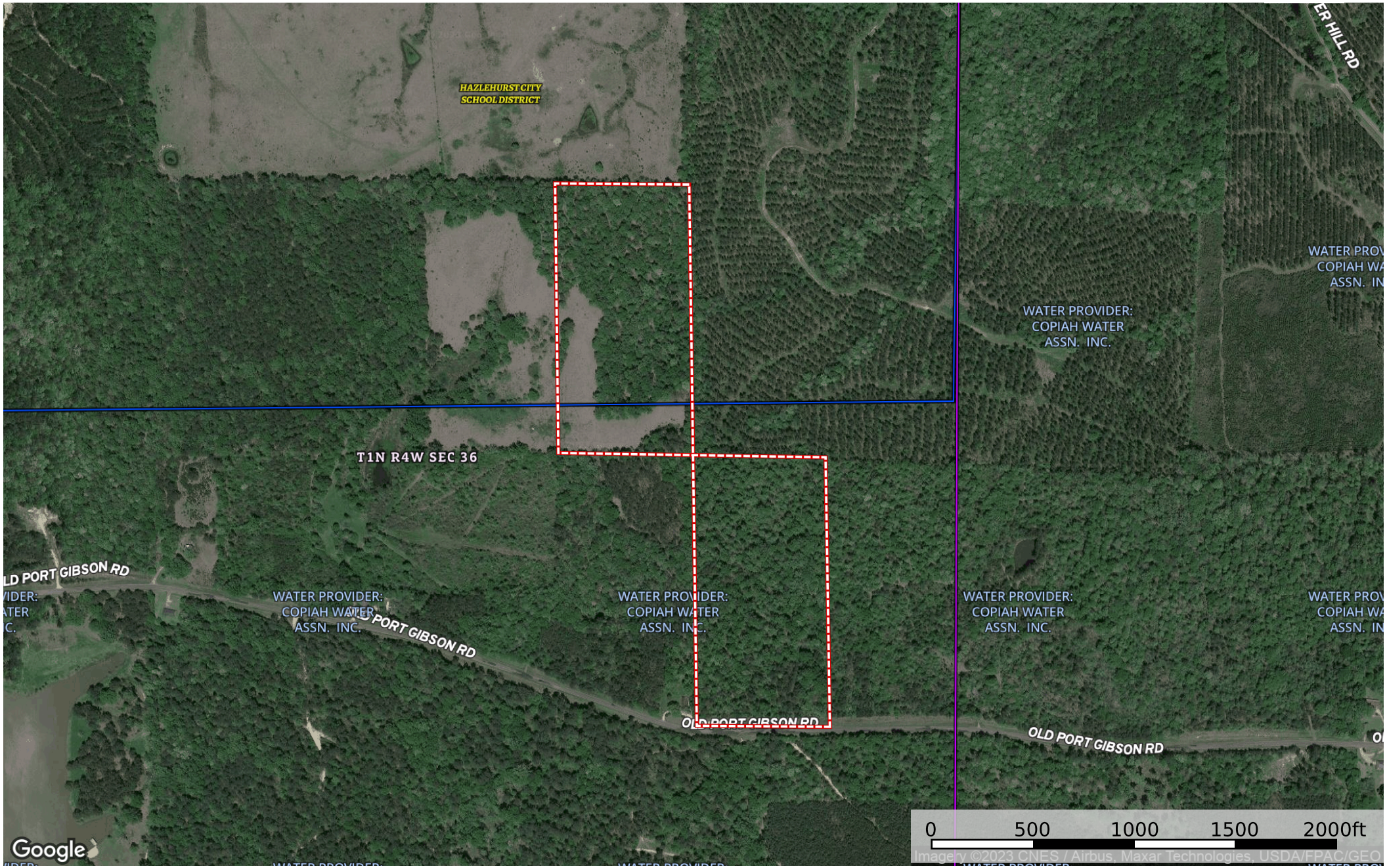
PO Box 496

 The information contained herein was obtained from sources deemed to be reliable. Land id™ Services makes no warranties or guarantees as to the completeness or accuracy thereof.



# Copiah 40 Owner Broker

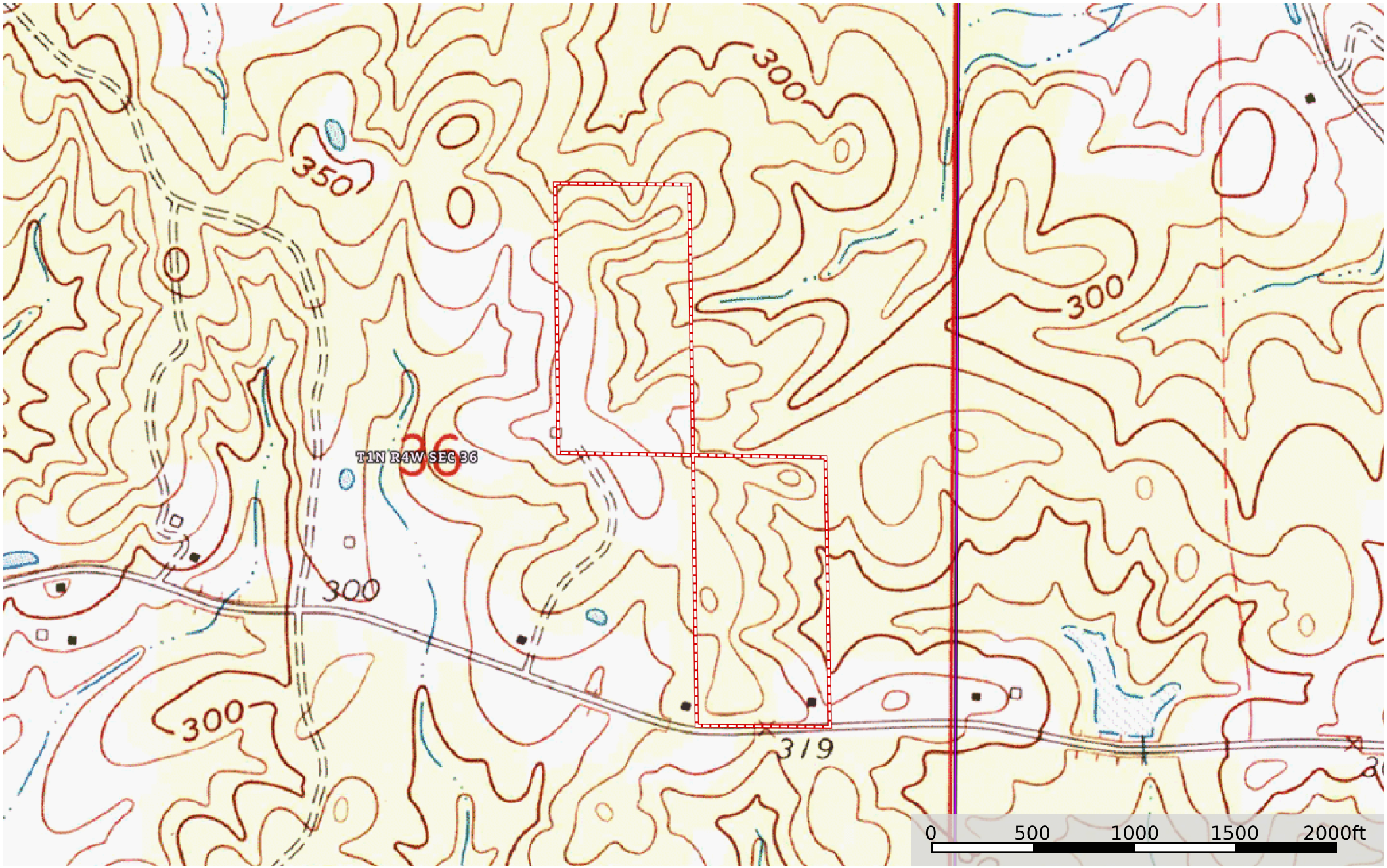
Copiah County, Mississippi, 40 AC +/-



- Boundary
- Water Service Areas
- Unified Sch. Dist.
- Secondary Sch. Dist.
- Elementary Sch. Dist.



**Copiah 40 Owner Broker**  
Copiah County, Mississippi, 40 AC +/-



 Boundary