



"Your One Stop Real Estate Shop"

LAND & TIMBER | RESIDENTIAL | COMMERCIAL | OIL & GAS

- \* ONLY \$120,000.00
- \* 40 acres +/-
- \* Live Creek w/ Timber

## Country Living at it's BEST!!! Gently Rolling 40 ac +/- Great Hunting!!!

- This is your HAPPY PLACE!
- Beautiful Pines & Hardwoods
- Big Box Retail Area
- Creek Frontage on Crooked Creek
- Great Road Frontage & Access
- Power Available/Great Hunting
- Address: 598a Crooked Creek Rd, Silver Creek, MS



**Gary W. Stewart**

**MOBILE: 601-757-3009**

**gwstewart@4cornerprop.com**

**Office: 601-952-2828**

**Fax: 601-510-9446**

**www.4cplandandhomes.com**



# Priced to sell

- Incredible Location
- Must See

# Excellent Home Sites

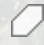
- Great Community
- Abundant Wildlife

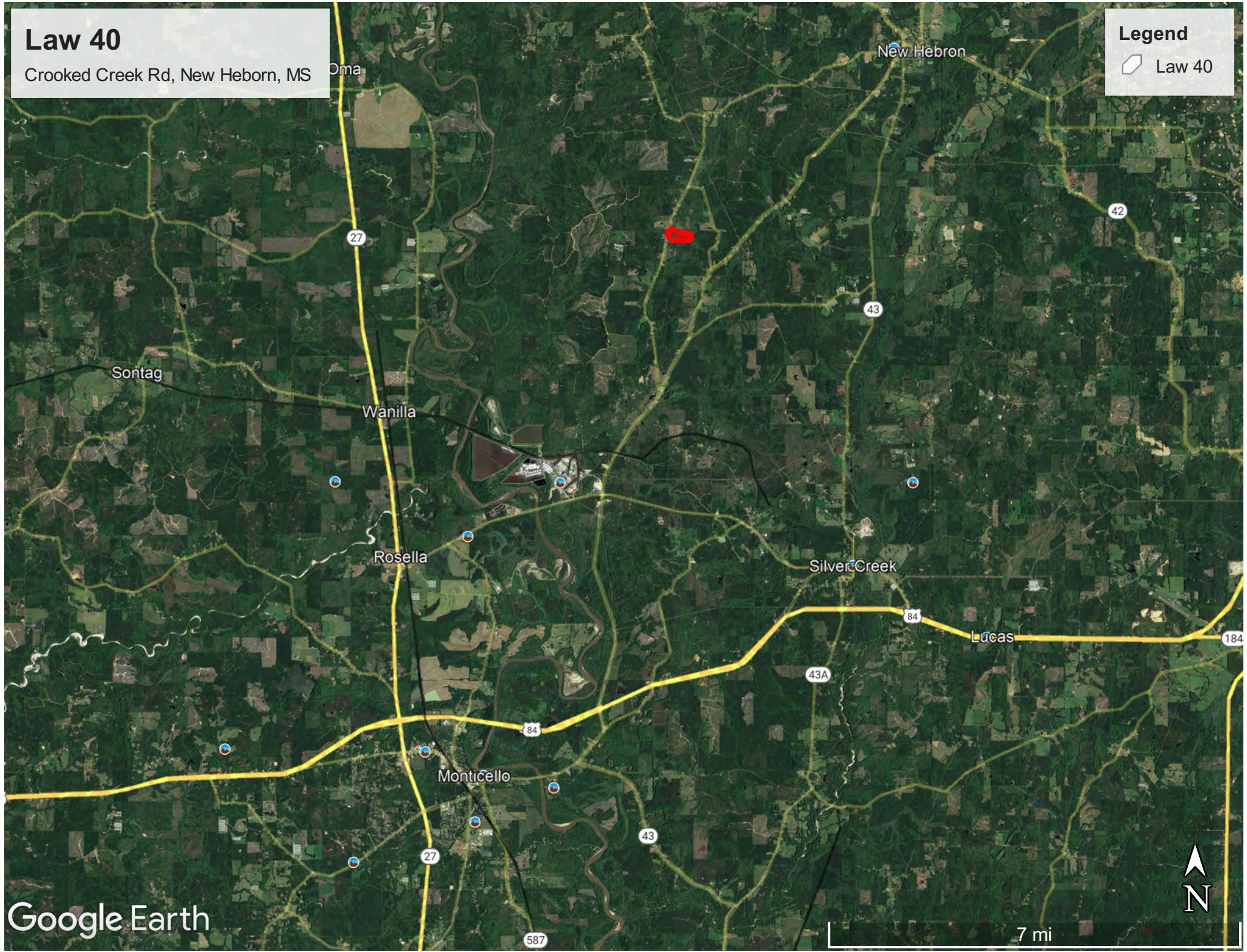


# Law 40

Crooked Creek Rd, New Heborn, MS

## Legend


 Law 40

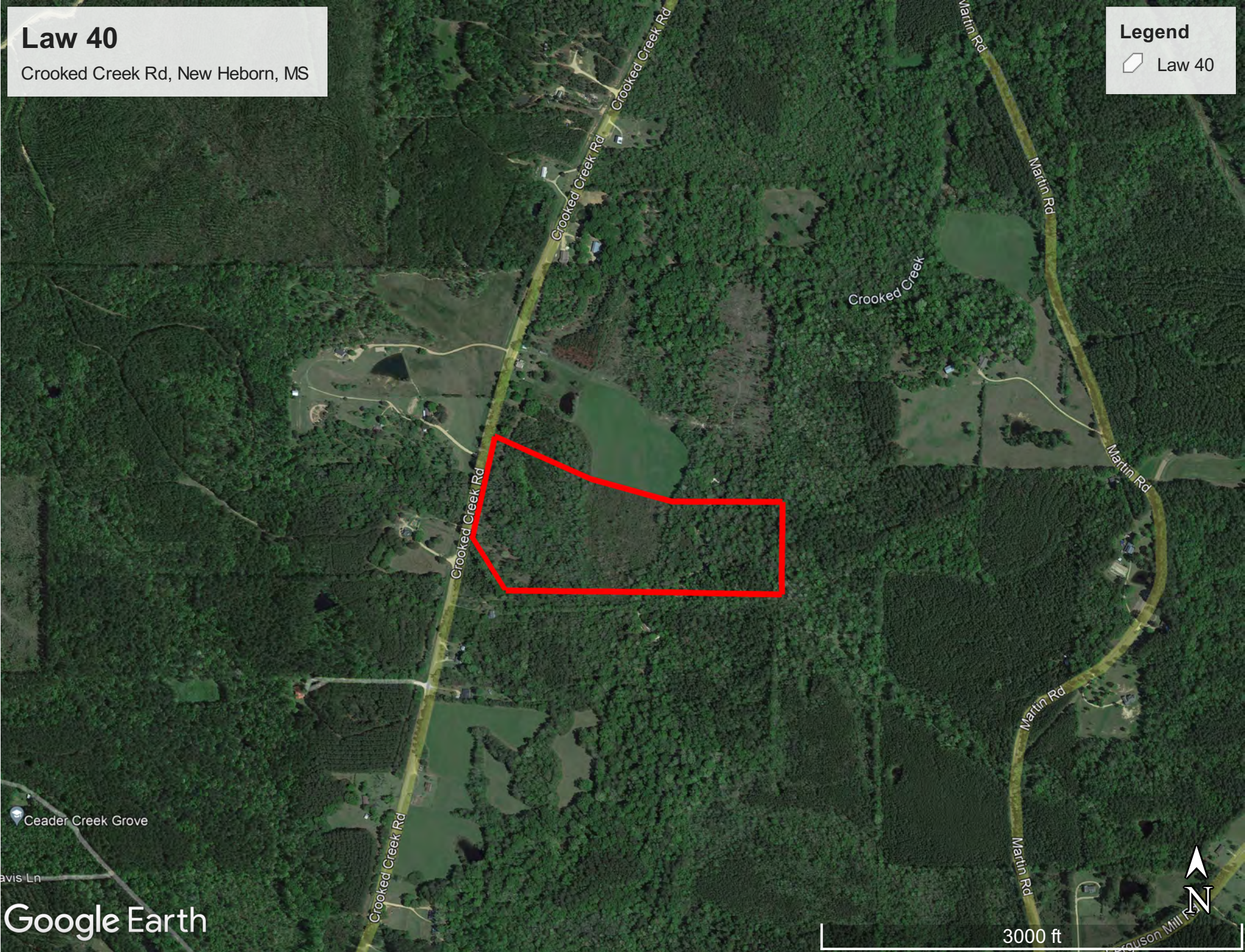


# Law 40

Crooked Creek Rd, New Heborn, MS

## Legend

 Law 40



Ceader Creek Grove

avis Ln

Google Earth

3000 ft




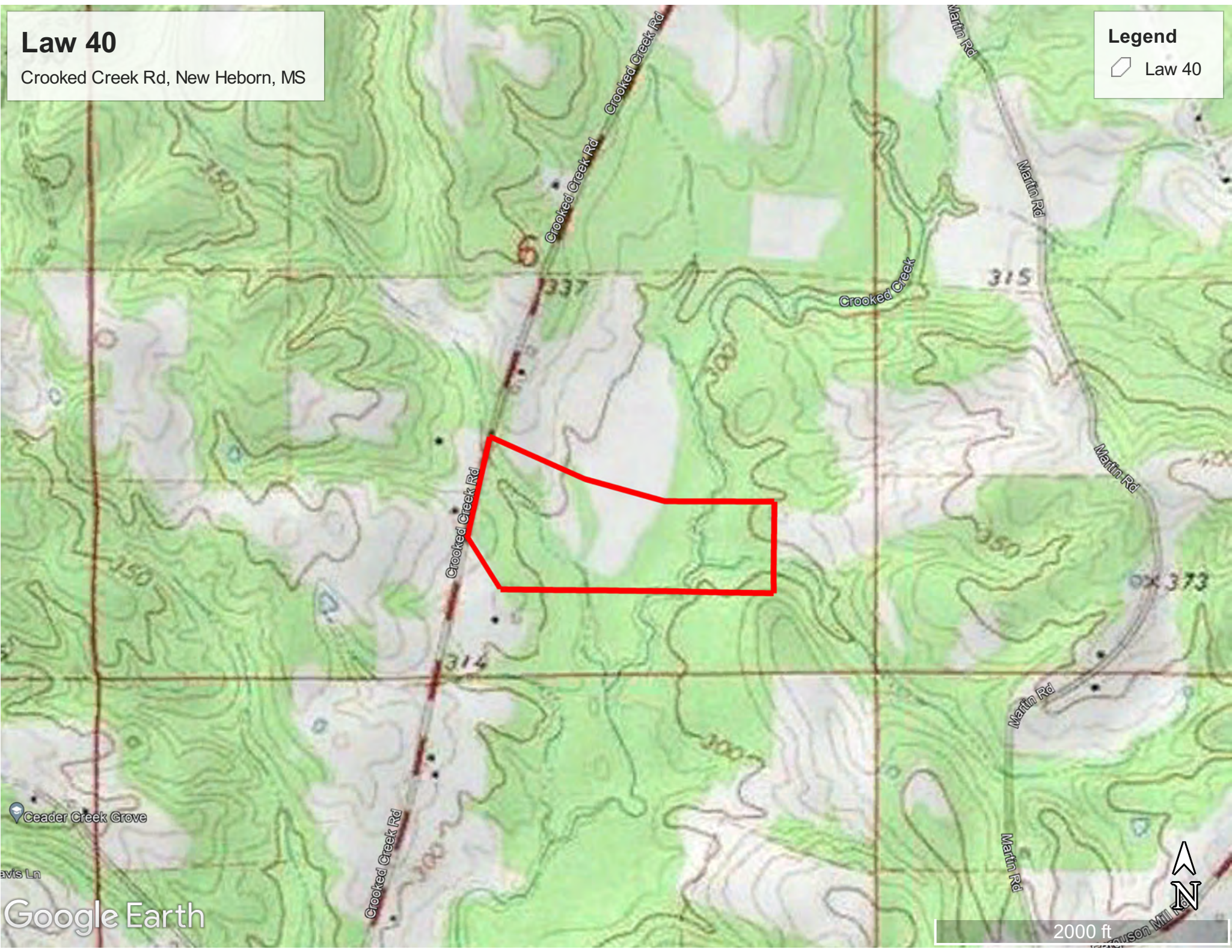
Mason Mill Rd

# Law 40

Crooked Creek Rd, New Heborn, MS

## Legend

 Law 40



Cedar Creek Grove

avis Ln

Google Earth

2000 ft

