



"Your One Stop Real Estate Shop"

LAND & TIMBER | RESIDENTIAL | COMMERCIAL | OIL & GAS

- * ONLY \$198,000.00
- * 44 ac +/-
- * Land on a live creek
- * Incredible Opportunity

The Perfect-size Family Tract!

44 ac +/- of prime Pines on rolling hills in NW Amite Co

- Awesome Pines & Hardwoods w./ creek
- Gently Rolling Hills with beautiful homesites
- Excellent Road Frontage– Abundant Wildlife
- Just NW of Liberty, MS off Hwy 567
- Beautiful surrounding area
- Address: 3536a King Rd, Liberty, MS 39645



Gary W. Stewart, Owner/Broker

MOBILE: 601-757-3009

gwstewart@4cornerprop.com

Office: 601-990-2132

Fax: 601-510-9446

www.4cplandandhomes.com



Additional Info:


- Excellent Hunting
- Multi- Homesites
- Loaded with Deer & Turkey
- Nature at its best



Amite 44

3536a King Rd, Liberty, MS 39645

Legend

 King Tract

King & Wilkerson Rd

24

567

569

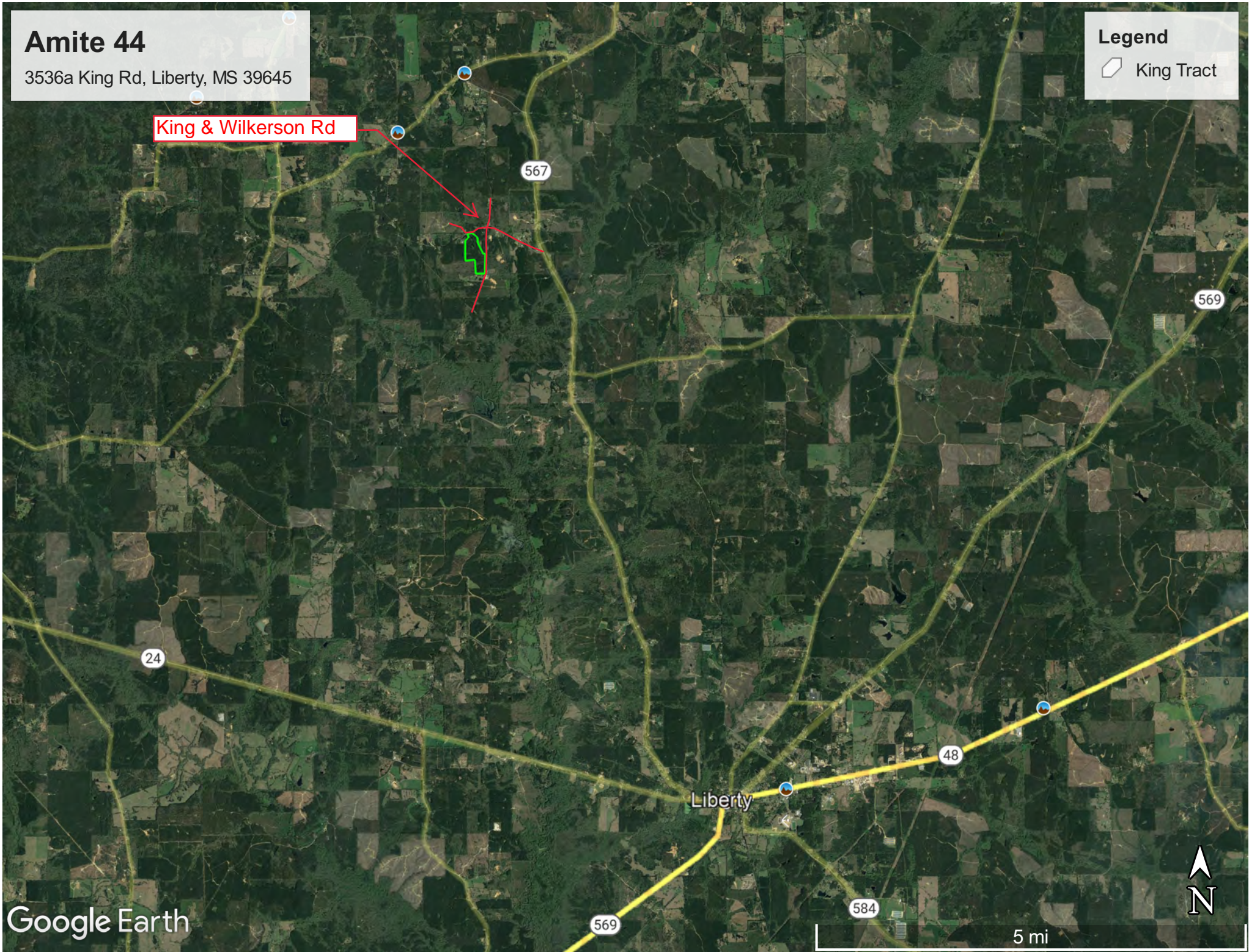
Liberty

48

584

569

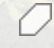
5 mi

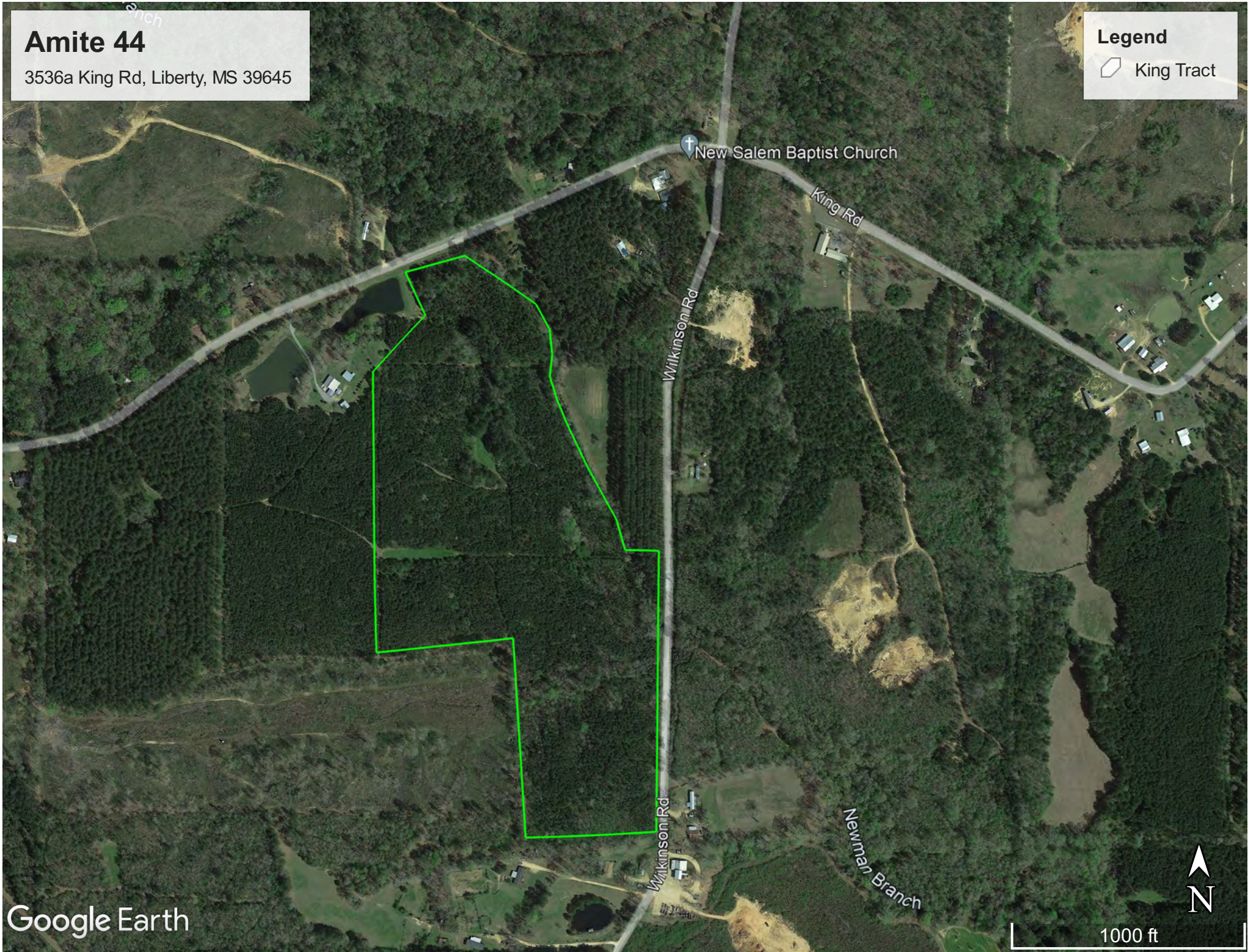


Amite 44

3536a King Rd, Liberty, MS 39645

Legend


 King Tract

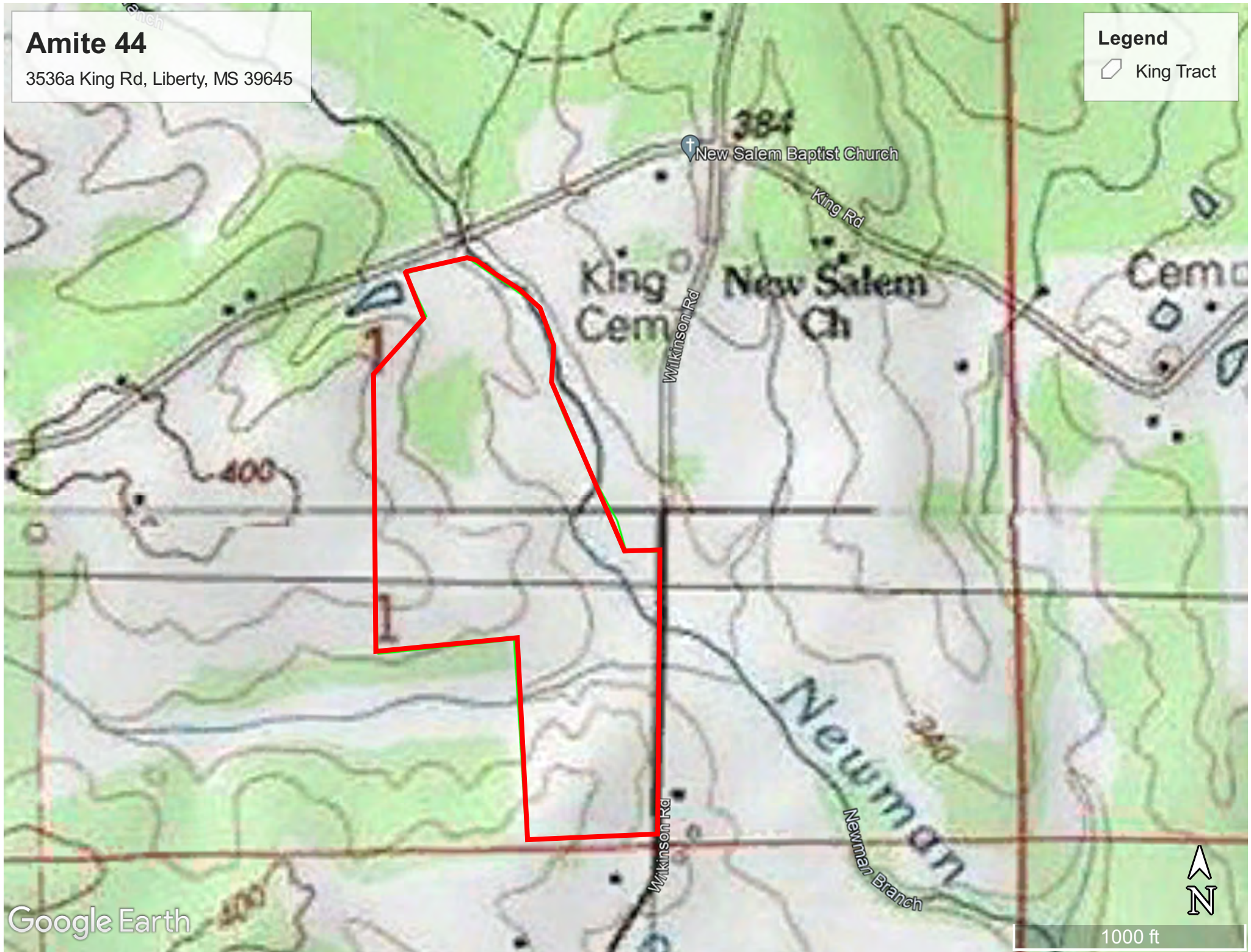


Amite 44

3536a King Rd, Liberty, MS 39645

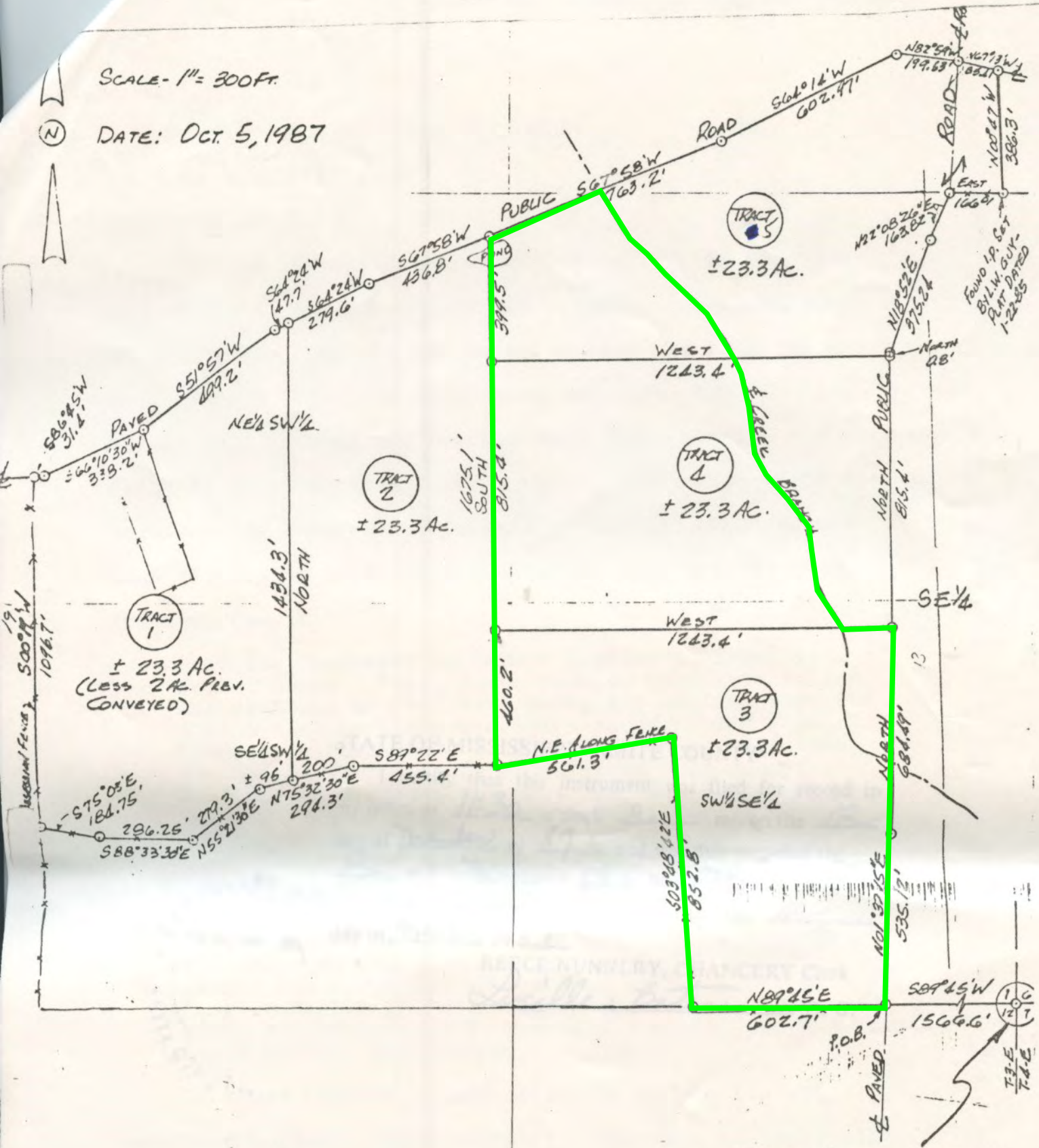
Legend

 King Tract



SCALE - 1" = 300 FT.

DATE: OCT. 5, 1987



BEG. OF SURVEY - IRON CORNER
 STAKE FOUND MARKING THE
 S.E. CORNER OF SECTION 1,
 T-3-N, R-3-E, AMITE CO., MISS.

A DIVISION OF LANDS OF LLOYD KING
 IN SECTION 1, T-3-N, R-3-E, AMITE CO., MISS.

SURVEYED BY
 WILLIE A. MOAK, SURVEYOR
 MRC LICENSE No 1510