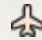
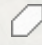


Tensas 51

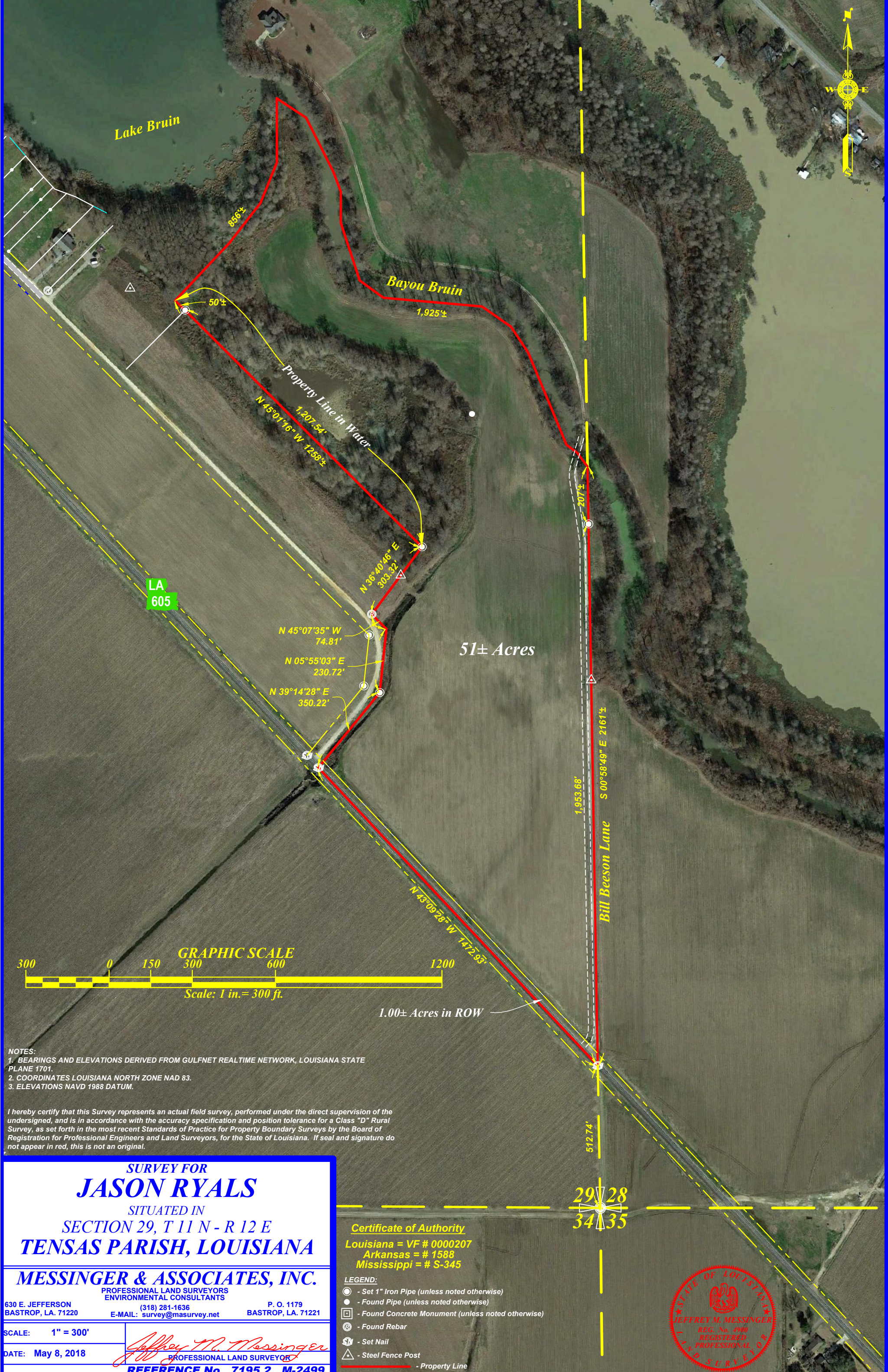
Hwy 605, St. Joe, LA

Legend

-  Tensas
-  Tensas 51

subject Tract





SURVEY FOR
JASON RYALS
 SITUATED IN
SECTION 29, T 11 N - R 12 E
TENSAS PARISH, LOUISIANA

MESSINGER & ASSOCIATES, INC.
 PROFESSIONAL LAND SURVEYORS
 ENVIRONMENTAL CONSULTANTS

630 E. JEFFERSON BASTROP, LA. 71220 (318) 281-1636 P. O. 1179 BASTROP, LA. 71221 E-MAIL: survey@masurvey.net

SCALE: 1" = 300'
 DATE: May 8, 2018
Jeffrey M. Messinger
 PROFESSIONAL LAND SURVEYOR
REFERENCE No. 7195.2 M-2499

Certificate of Authority
 Louisiana = VF # 0000207
 Arkansas = # 1588
 Mississippi = # S-345

- LEGEND:**
- - Set 1" Iron Pipe (unless noted otherwise)
 - - Found Pipe (unless noted otherwise)
 - - Found Concrete Monument (unless noted otherwise)
 - ⊙ - Found Rebar
 - ⊙ - Set Nail
 - △ - Steel Fence Post
 - - Property Line





29 28
34 35

Tensas 51

Hwy 605, St. Joe, LA

Legend

-  Tensas
-  Tensas 51

