



"Your One Stop Real Estate Shop"

LAND & TIMBER | RESIDENTIAL | COMMERCIAL | OIL & GAS

\* ONLY \$87,999.00

\* 22 ac +/-

\* Beautiful Land

\* Incredible Opportunity

## The Perfect-size Family Tract!

22 ac+/- of prime Pines on rolling hills in NE Amite Co

- Awesome Pines & Hardwoods
- Gently Rolling Hills with beautiful homesites
- Excellent Road Frontage— Abundant Wildlife
- Just West of Summit, MS off Hwy 98
- Beautiful surrounding area
- Address: 6125 County Line Rd, Summit, MS 39666



Gary W. Stewart, Owner/Broker

MOBILE: 601-757-3009

gwstewart@4cornerprop.com

Office: 601-990-2132

Fax: 601-510-9446

www.4cplandandhomes.com



## Additional Info:

- Excellent Hunting
- Multi- Homesites
- Loaded with Deer & Turkey
- Nature at its best



# Amite 22

6125 County Line Rd, Summit  
12-4-6, Amite Co, MS



## Legend

Amitee 22

Google Earth

© 2020 Google

Pike County Li

Old Brookhaven Rd

Lawrence St



Summit

Robb St

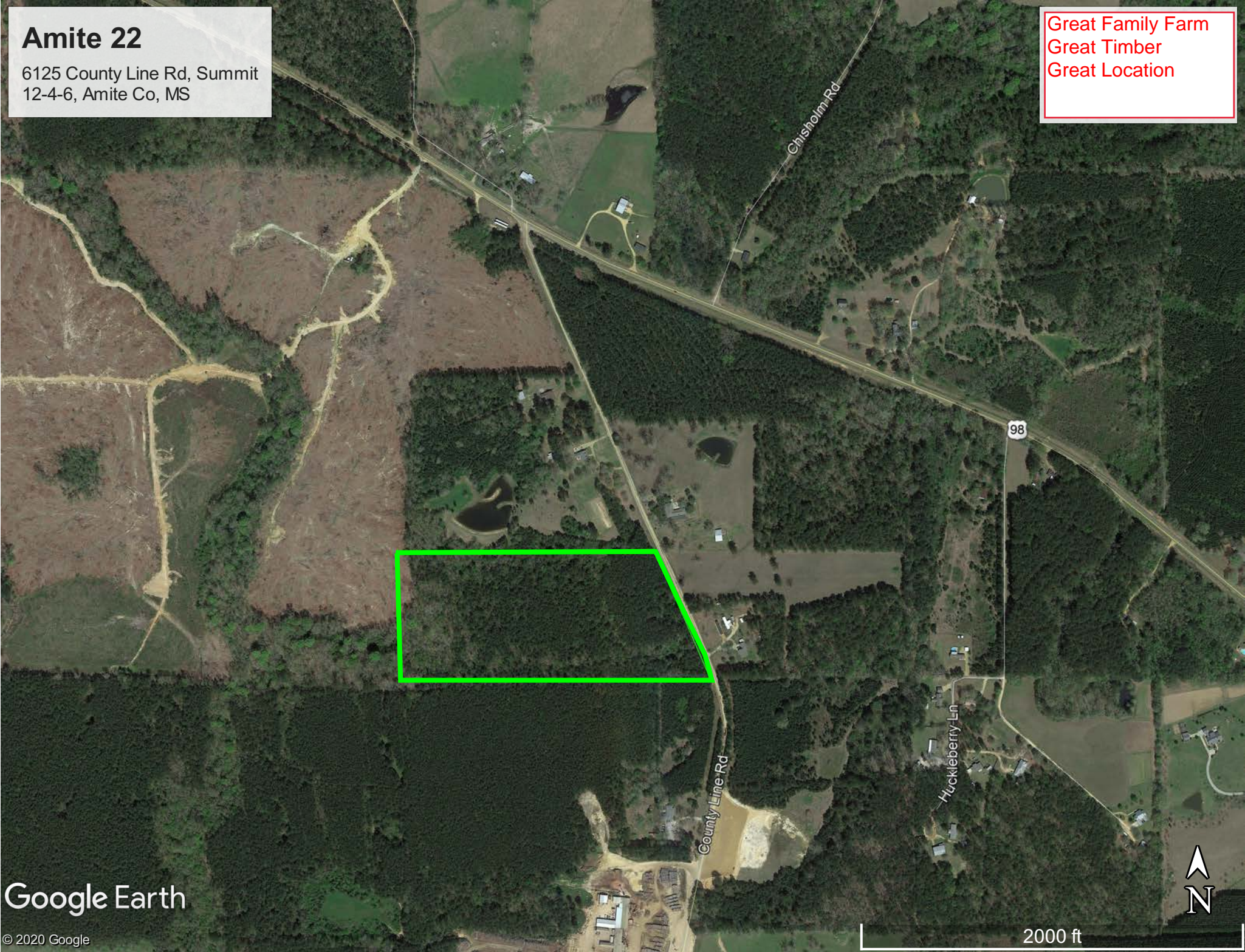


2 mi

# Amite 22

6125 County Line Rd, Summit  
12-4-6, Amite Co, MS

Great Family Farm  
Great Timber  
Great Location



# Amite 22

6125 County Line Rd, Summit  
12-4-6, Amite Co, MS

**Legend**

- Amite 22
- House and Pool

