



"Your One Stop Real Estate Shop"

LAND & TIMBER | RESIDENTIAL | COMMERCIAL | OIL & GAS

- * ONLY \$114,000.00
- * 33.66 ac +/- (\$3386/ac)
- * Wesson School District
- * Incredible Opportunity

Great Country Living!!!

33.66 ac +/- of prime hardwoods on rolling hills

- Awesome Hardwoods & Hunting
- Gently Rolling Hills with beautiful homesites
- Great School District
- Midway Community
- Easy access from I-55 & LA
- Hunting Cabin onsite w/ more land
- Address: 2145b Midway Rd, Wesson, MS 39191



Gary W. Stewart, Owner/Broker

MOBILE: 601-757-3009

gwstewart@4cornerprop.com

Office: 601-990-2132

Fax: 601-510-9446

www.4cplandandhomes.com



Additional Info:

- Rolling Hills
- Beautiful Timber
- Great Neighborhood
- Minutes from LA



Copiah 32- Midway Rd, Wesson, MS

Legend

Copiah 16

548

Gallman

Copiah

Hazlehurst

472

Subject Tract



Wesson

Google earth

© 2017 Google



10 mi

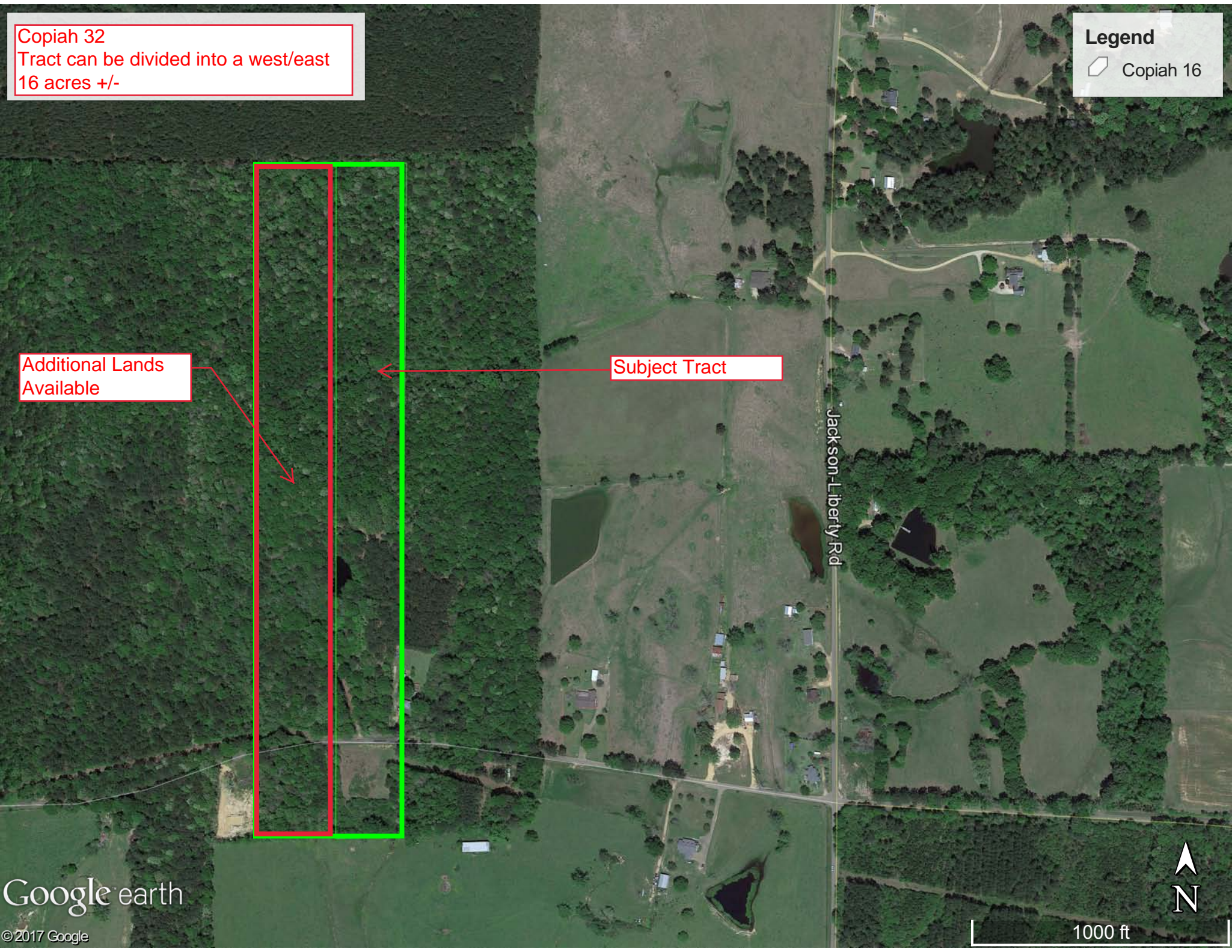
Copiah 32
Tract can be divided into a west/east
16 acres +/-

Legend
Copiah 16

Additional Lands
Available

Subject Tract

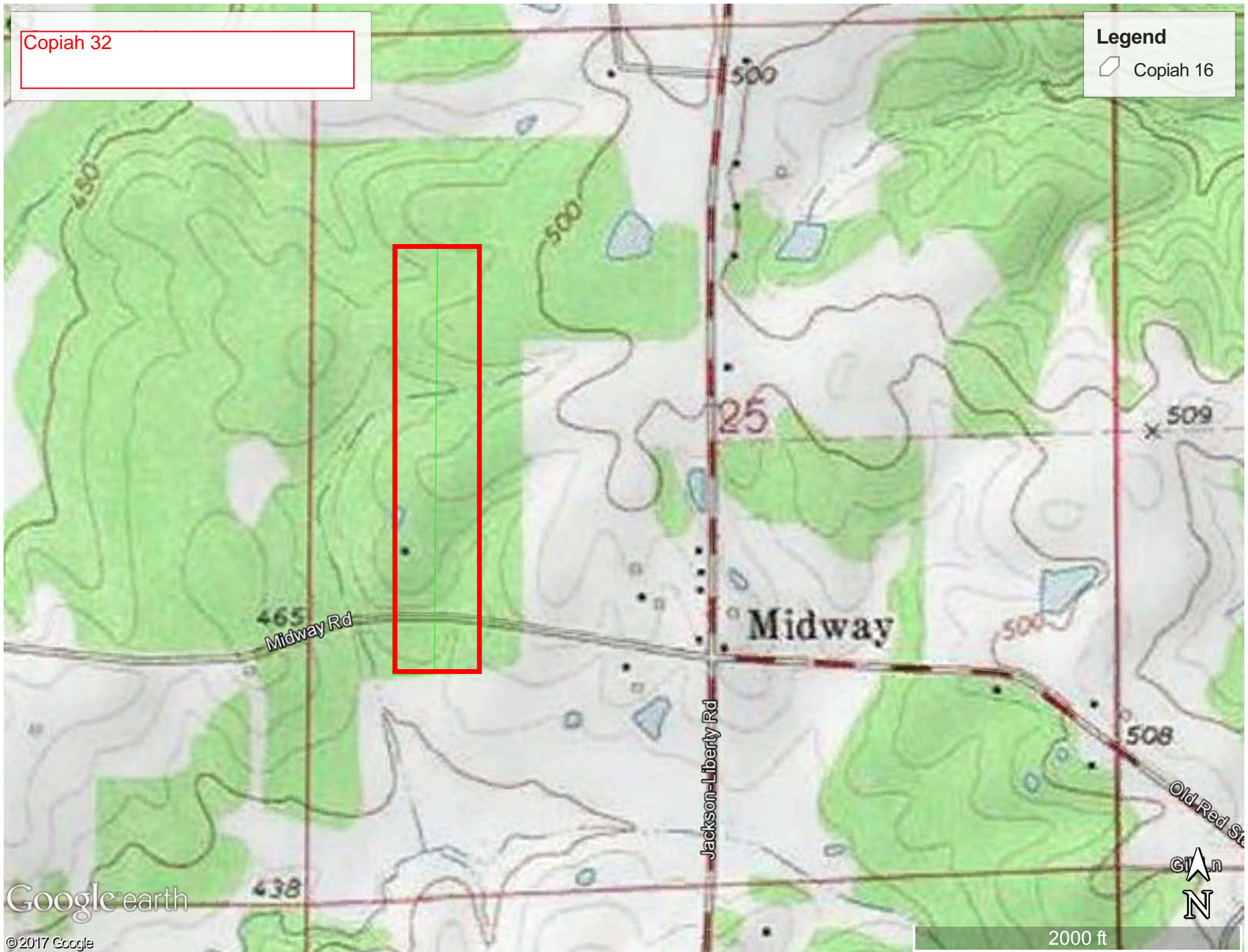
Jackson-Liberty Rd



Copiah 32

Legend

Copiah 16



Google earth

© 2017 Google

2000 ft