



"Your One Stop Real Estate Shop"

LAND & TIMBER | RESIDENTIAL | COMMERCIAL | OIL & GAS

- * ONLY \$45,000.00
- * 10 acres +/-
- * Great County Estate
- * Prime Road Frontage

Best Home-Site in Pike County, MS

10 acres +/- for spacious living

Incredible piece of property!!!

- Beautiful Pines
- Road Frontage with utilities
- Rolling Terrain
- Easy Access SE LA, less than 1hr.
- Great Deer and Turkey Hunting
- Abundant Wildlife
- Address: 1044 Stalling Curves Rd, Magnolia, MS 39652
- GPS: 31.0803 90.3275



Gary W. Stewart

MOBILE: 601-757-3009

gwstewart@4cornerprop.com

Office: 601-990-2132

Fax: 601-510-9446

www.4cplandandhomes.com





Gary W. Stewart

MOBILE: 601-757-3009

gwstewart@4cornerprop.com

Office: 601-990-2132

Fax: 601-510-9446


www.4cplandandhomes.com

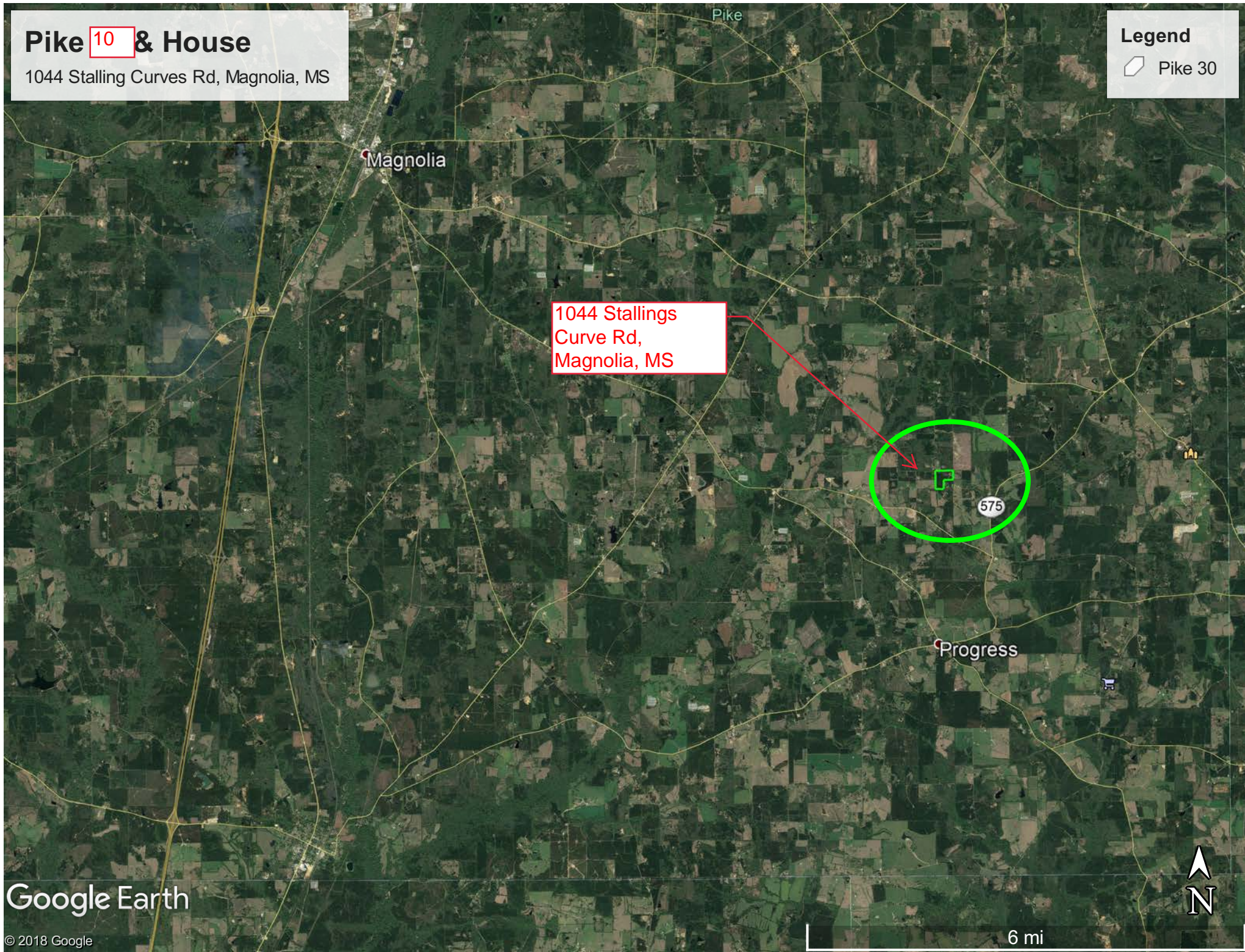


Pike 10 & House

1044 Stalling Curves Rd, Magnolia, MS

Legend


 Pike 30



Pike 10 & House

1044 Stalling Curves Rd, Magnolia, MS

Legend

 Pike 30

Seller will subdivide

Subject Tract,
additional lands
available

Stalling Curves

Google Earth

© 2018 Google




1000 ft

Pike 30 & House

1044 Stalling Curves Rd, Magnolia, MS

Legend

 Pike 30

