

Denman Ferguson
601-214-6433
4 Corner Properties, LLC
1085 Gluckstadt Rd Suite 500B
Madison, MS 39110
denman@4cornerprop.com



Cell: 601-214-6433
Office: 601-952-2828
Fax: 601-510-9446

MADISON COUNTY HOMESITE

7.6 ACRES, MADISON, COUNTY, MS

- 7.67 Acre Home Place
- 5 Year Old Cut Over
- 2 Stocked Acre Lake
- Small Workshop
- 30 X 50 Pole Barn
- Private and Secluded Property
- Large Front Porch
- Screened in Back porch
- Frontage on US Hwy 51
- Covered Pergola off Back Porch



Country home with 2 acre stocked pond on 7.6 acres, pole barn, workshop, large live oaks provide lot's of shade, screened in back porch, large front porch, fresh paint, 1850 square foot, 3 bedrooms and 2 1/2 baths, large front pasture has plenty of room for horses This property is priced to sell so call for your private showing today.

Call Denman Ferguson 601-214-6433

Directions: From the square in Canton take Hwy 51 North for 8.2 miles and home is on the left.



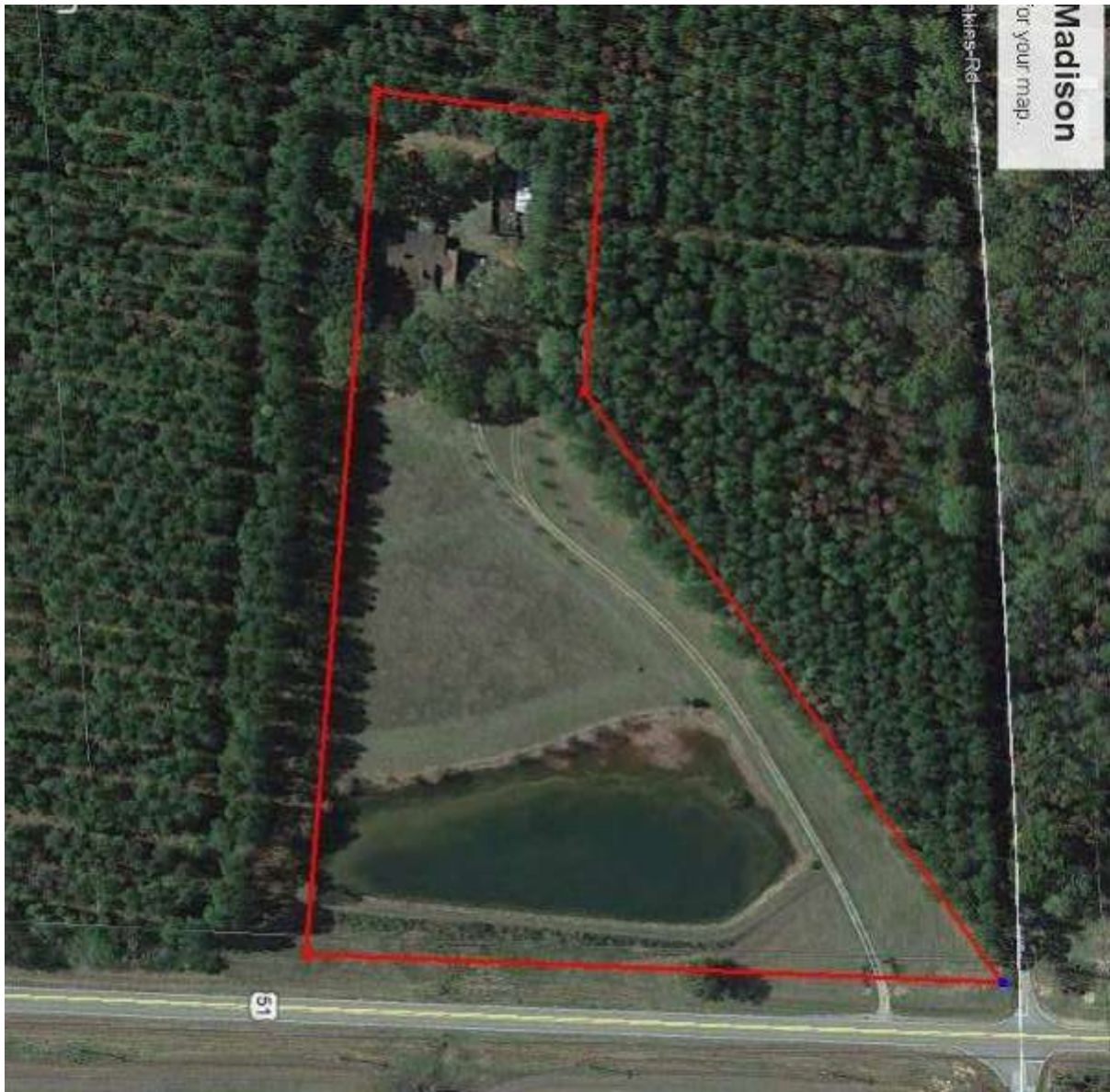
Denman Ferguson
601-214-6433
4 Corner Properties, LLC
1085 Gluckstadt Rd Suite 500B
Madison, MS 39110
denman@4cornerprop.com





Denman Ferguson
 601-214-6433
 4 Corner Properties, LLC
 577 Hwy 51 Suite A
 Ridgeland, MS 39157
 denman@4cornerprop.com





Aerial Photo



Denman Ferguson
601-214-6433
4 Corner Properties, LLC
577 Hwy 51 Suite A
Ridgeland, MS 39157
denman@4cornerprop.com