

Denman Ferguson  
601-214-6433  
4 Corner Properties, LLC  
1085 Gluckstadt Rd Suite 500B  
Madison, MS 39110  
denman@4cornerprop.com



Cell: 601-214-6433  
Office: 601-952-2828  
Fax: 601-510-9446

## *MADISON COUNTY HOMESITE* *7.6 ACRES, MADISON, COUNTY, MS*

- 7.67 Acre Home Place
- 5 Year Old Cut Over
- 2 Stocked Acre Lake
- Small Workshop
- 30 X 50 Pole Barn
- Private and Secluded Property
- Large Front Porch
- Screened in Back porch
- Frontage on US Hwy 51
- Covered Pergola off Back Porch



**Country home with 2 acre stocked pond on 7.6 acres, pole barn, workshop, large live oaks provide lot's of shade, screened in back porch, large front porch, fresh paint, 1850 square foot, 3 bedrooms and 2 1/2 baths, large front pasture has plenty of room for horses This property is priced to sell so call for your private showing today.**

**Call Denman Ferguson 601-214-6433**

Directions: From the square in Canton take Hwy 51 North for 8.2 miles and home is on the left.



Denman Ferguson  
601-214-6433  
4 Corner Properties, LLC  
1085 Gluckstadt Rd Suite 500B  
Madison, MS 39110  
denman@4cornerprop.com

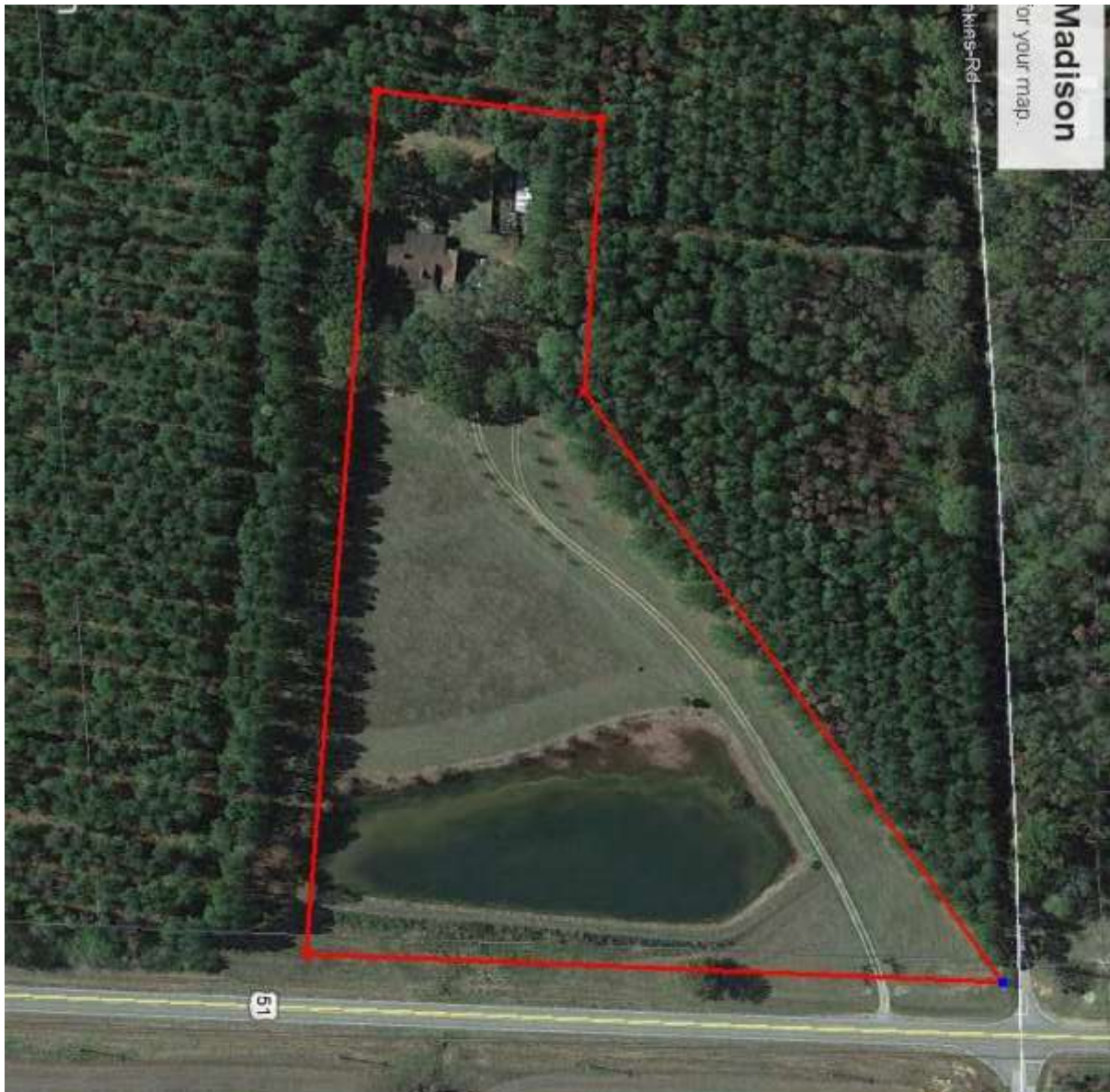




Denman Ferguson  
 601-214-6433  
 4 Corner Properties, LLC  
 577 Hwy 51 Suite A  
 Ridgeland, MS 39157  
 denman@4cornerprop.com







**Aerial Photo**



Denman Ferguson  
 601-214-6433  
 4 Corner Properties, LLC  
 577 Hwy 51 Suite A  
 Ridgeland, MS 39157  
[denman@4cornerprop.com](mailto:denman@4cornerprop.com)