

Mobile: 601-540-7240
Joseph@4CornerProp.com
www.MSLandPro.com
www.4CornerProp.com



Call Joseph Today!!!
Main: 601-952-2828
Fax: 601-952-2829
Land Specialist!

- 74 Acres Leake County, MS!
- Paved Road Frontage on Highway 16 and Pat Luckett Road!
- This Property Consist of 8 year old Plantation Pines!
- Great Road System Throughout Property!
- Multiple Food Plots in Place!
- Storage Shed on Property!
- Only 15 Minutes from Canton!
- Great Deer and Turkey Hunting!
- This is a must see tract!!!!!!



OUTSTANDING LEAKE COUNTY RECREATIONAL PROPERTY



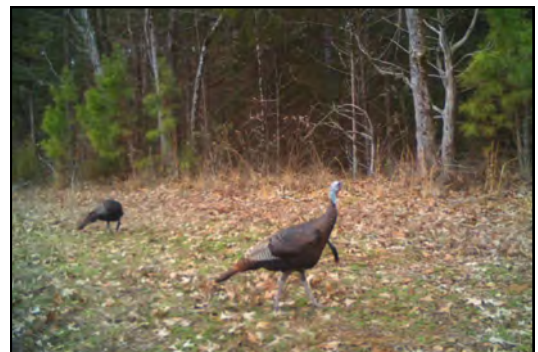
Have you been looking for a small tract of land to enjoy great deer and turkey hunting with your family and friends? This 74 acres has an extensive road system, multiple food plots, deer stands in place, creeks that run through the property and a small shed for storage. This tract also consist of 8 year old planted pines that are thriving. With road frontage on Highway 16 and Pat Lucckett Road, all utilities are available to build a house or cabin. The seller has taken many mature deer and turkeys off of this property which has been strongly managed. Don't miss this tract. Call me today for your private showing!



JOSEPH PRESLEY
Realtor®, Land Specialist
4 Corner Properties, LLC
855 South Pear Orchard Road
Ridgeland, MS 39157







4 CORNER
PROPERTIES • LLC
601.952.2828 • www.4cornerprop.com

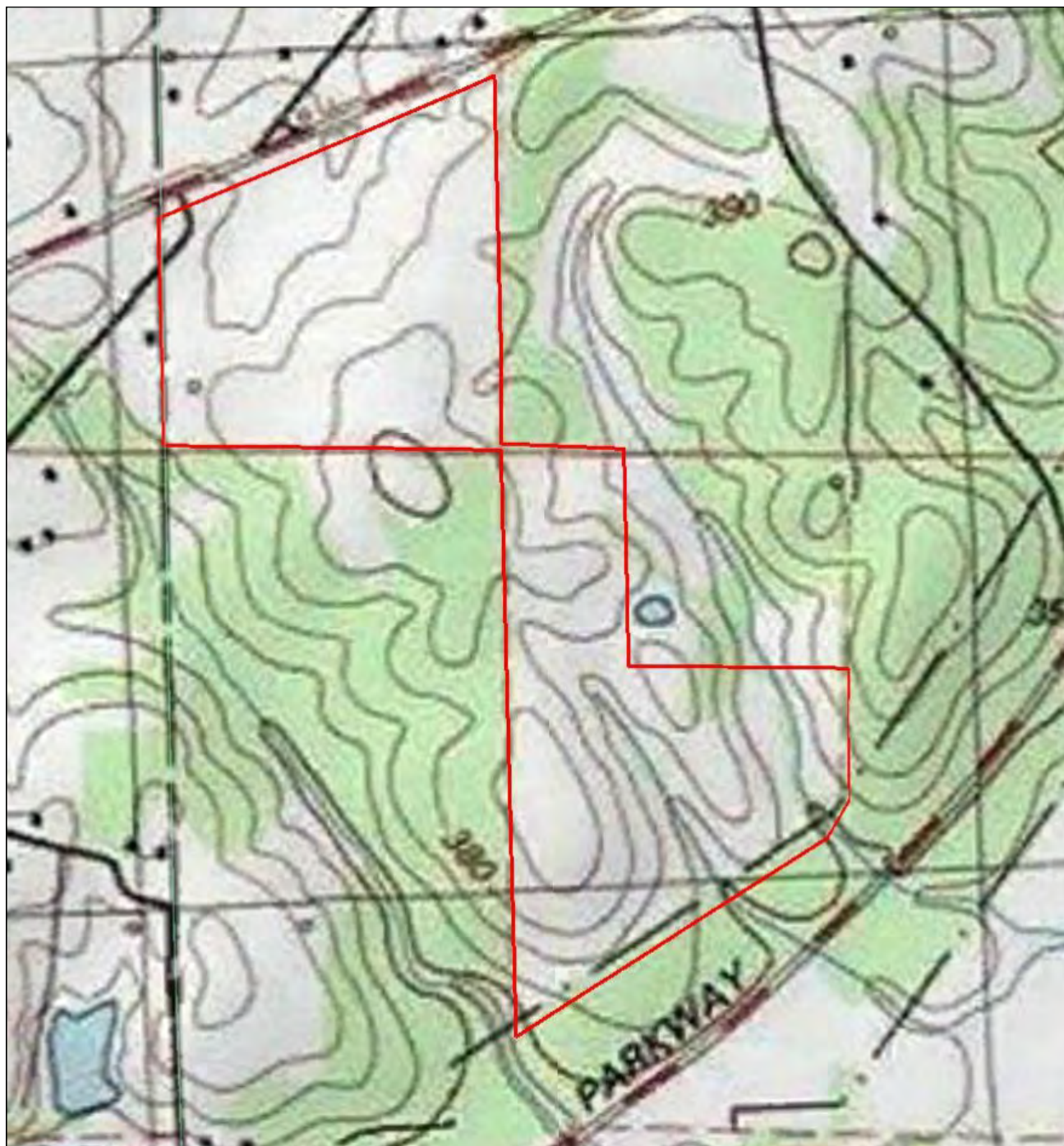
Joseph Presley
Realtor®,
Land Specialist
Mobile 601-540-7240
JPresley@4CornerProp.com



Aerial Map

 **4 CORNER**
PROPERTIES • LLC
601.952.2828 ■ www.4cornerprop.com

Joseph Presley
Realtor®,
Land Specialist
Mobile 601-540-7240
JPresley@4CornerProp.com



Topo Map



Joseph Presley
Realtor®,
Land Specialist
Mobile 601-540-7240
JPresley@4CornerProp.com