

Denman Ferguson  
601-214-6433  
4 Corner Properties, LLC  
1085 Gluckstadt Rd 500-A  
Madison, MS 39110  
denman@4cornerprop.com



Cell: 601-214-6433  
Office: 601-952-2828  
Fax: 601-510-9446

## 433 ACRE HUNTING / TIMBER TRACT 2088 OLD CANTON ROAD

- 433 +/- of Hunting / Cropland
- 16 X 24 Camp House
- 120 Acres of Cropland
- 30 X 40 Pole Barn
- Mature Hardwoods
- Two Small Ponds
- Deer Stands and Food Plots
- Rental Income on Cropland
- Fenced in Secure Area
- Abundant Deer, Turkey and Ducks



**433 +/- Acres of Hunting land, timberland and cropland, located just south of Canton, MS. This property consists of 120 acres of cropland with yearly rental income, 40 acres of plantation pine over 140 acres of grassland, hardwoods, pipeline goes thru property, 2 ponds, low flooded land for ducks. This property has been managed for wildlife over the last 10 years. 30 x 40 pole barn with a 16 x 24 camp house. There are over a dozen box blinds already in place looking out over the foodplots and ag fields. Denman Ferguson 601-214-6433** *Directions: From Hwy 51 and Nissan Drive in Canton go South on Hwy 51 and turn left onto Old Canton Rd, Go for 1 1/4 miles and property is on the left.*



Denman Ferguson  
601-214-6433  
4 Corner Properties, LLC  
1085 Gluckstadt Rd 500-A  
Madison, MS 39110  
denman@4cornerprop.com





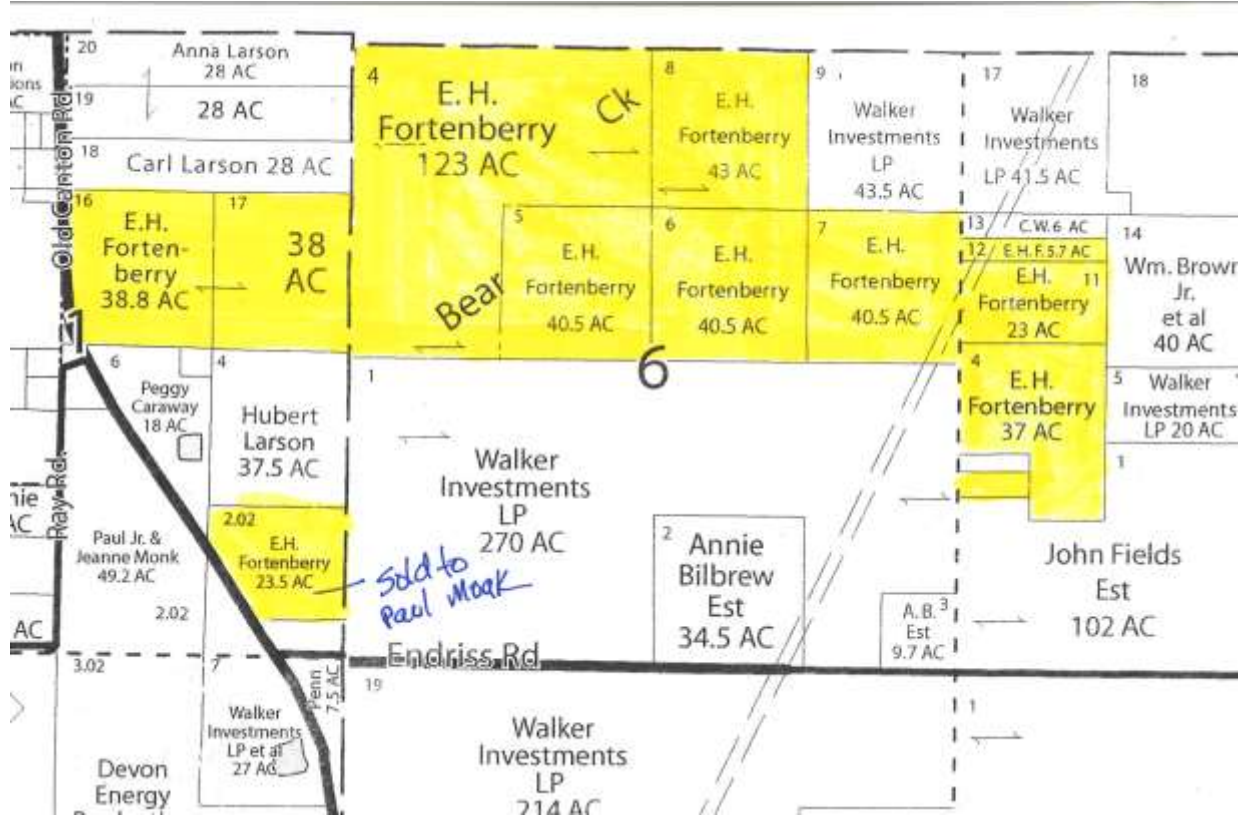
Denman Ferguson  
601-214-6433  
4 Corner Properties, LLC  
1085 Gluckstadt Rd 500-A  
Madison, MS 39110  
denman@4cornerprop.com





Denman Ferguson  
 601-214-6433  
 4 Corner Properties, LLC  
 1085 Gluckstadt Rd 500-A  
 Madison, MS 39110  
 denman@4cornerprop.com





### Ownership



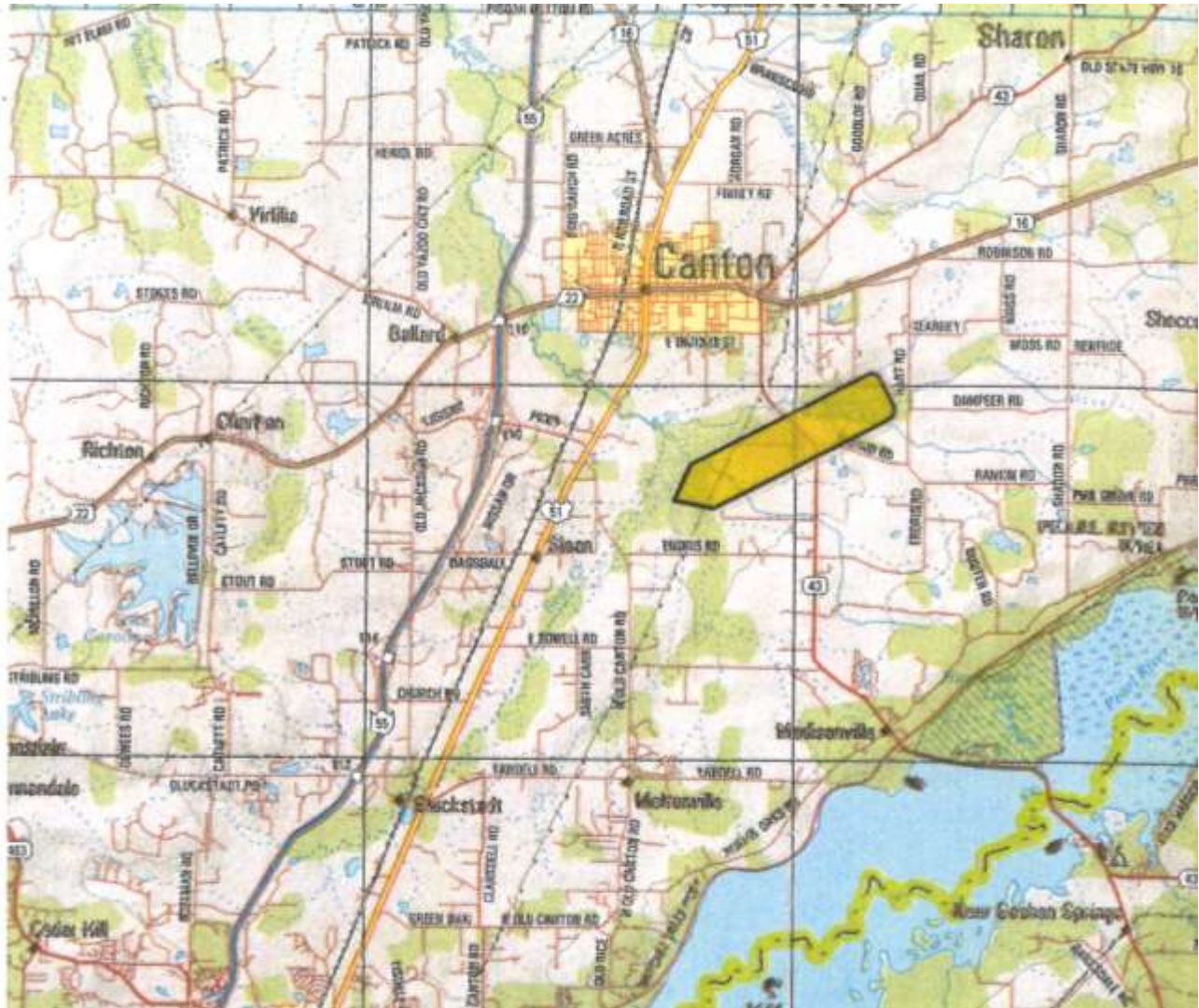
Denman Ferguson  
 601-214-6433  
 4 Corner Properties, LLC  
 1085 Gluckstadt Rd 500-A  
 Madison, MS 39110  
 denman@4cornerprop.com



### Aerial Photo



Denman Ferguson  
601-214-6433  
4 Corner Properties, LLC  
1085 Gluckstadt Rd 500-A  
Madison, MS 39110  
denman@4cornerprop.com



### Directional Map

*Directions: From Hwy 51 and Nissan Drive in Canton go South on Hwy 51 and turn left onto Old Canton Rd, Go for 1 1/4 miles and property is on the left.*



Denman Ferguson  
601-214-6433  
4 Corner Properties, LLC  
1085 Gluckstadt Rd 500-A  
Madison, MS 39110  
denman@4cornerprop.com