

Denman Ferguson

4CPLandandHomes

denman@4cornerprop.com



Cell: 601.214.6433

Office: 601.952.2828

Fax: 601.510.9446

HOME SITE WITH A POND *4.56 ACRES, MADISON COUNTY, MS*

- 4.56 Acre Land Tract
- Peaceful Country Living
- Great House or Mobile Home Site
- 1/2 Acre Pond
- Utilities Available
- Located just South of Loring Road
- Beautiful Large Oak Trees
- 1 Acre of Open Land
- 3.5 Acres of Hardwoods
- Quiet and Peaceful on Dead End Road



Madison County Home Site! This lot is on a dead end road with only a few neighbors. Property is wooded with large oak trees and has one acre of open pasture with a small pond. Property is large enough to support two **homes. Mobile homes are welcome. Small tracts like this are hard to come by in Madison County so don't let this one slip away without taking a look.** Directions: From Hwy 51 and Loring Road go east on Loring Road for 2.8 miles then turn right onto Stump Bridge Road, go for .08 miles and property is on your right. At 2173C Stump Bridge Road.



Denman Ferguson

601.214.6433

4 Corner Properties, LLC

577 Hwy 51 Suite A

Ridgeland, MS 39157

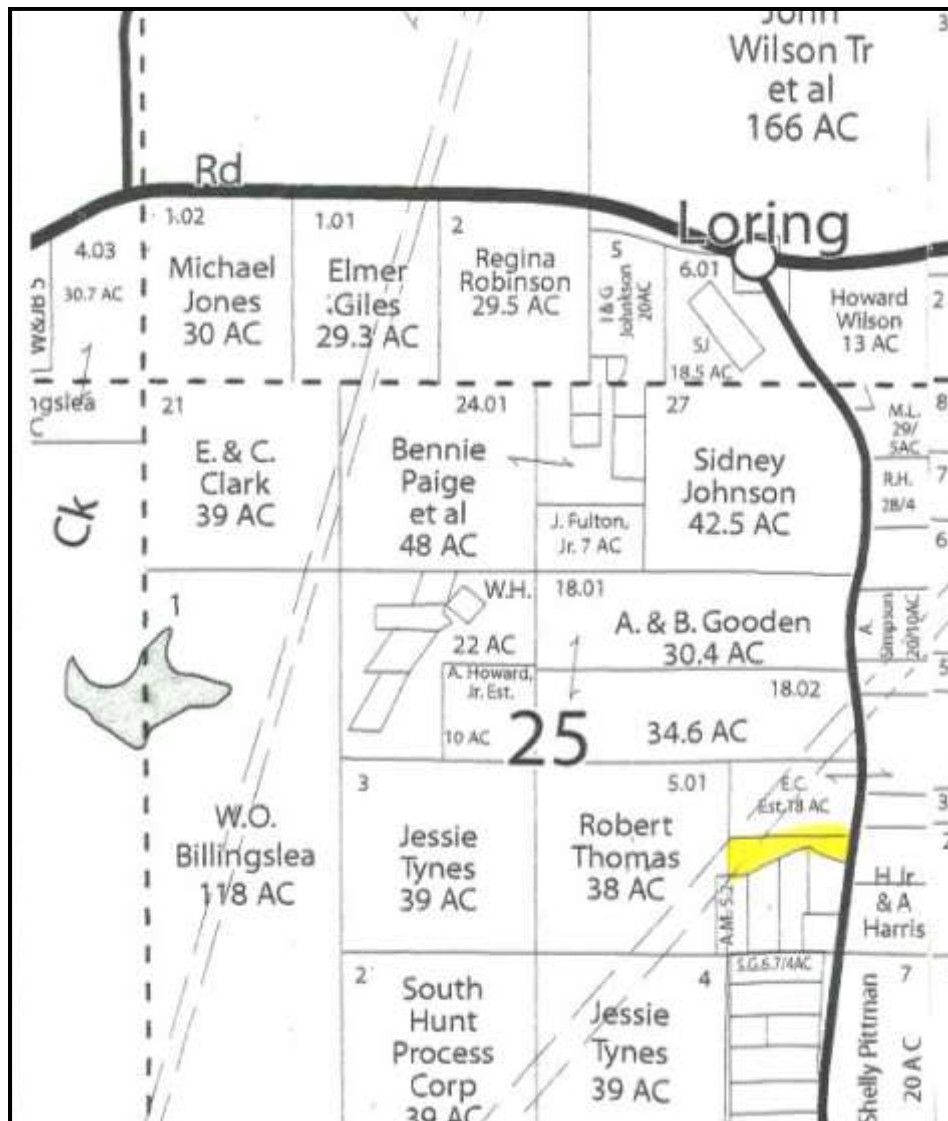
denman@4cornerproperties.com



Information is Believed to be Accurate but not Guaranteed



Denman Ferguson
 601.214.6433
 4 Corner Properties, LLC
 577 Hwy 51 Suite A
 Ridgeland, MS 39157
denman@4cornerproperties.com



Ownership Map

Denman Ferguson

601.214.6433

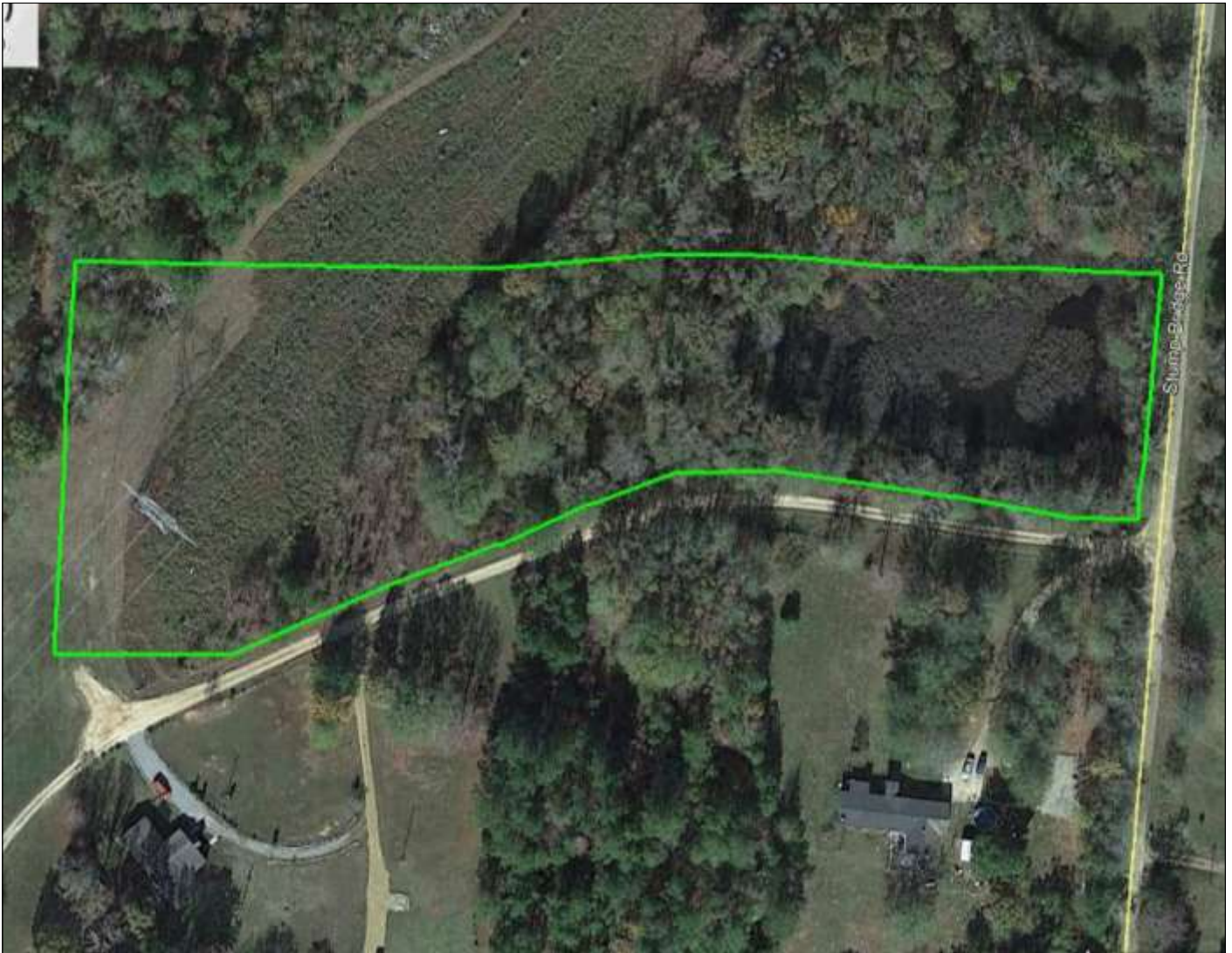
4 Corner Properties, LLC

577 Hwy 51 Suite A

Ridgeland, MS 39157

denman@4cornerproperties.com





Aerial Photo

Denman Ferguson
601.214.6433
4 Corner Properties, LLC
577 Hwy 51 Suite A
Ridgeland, MS 39157
denman@4cornerproperties.co





Directions: From Hwy 51 and Loring Road go east on Loring Road for 2.8 miles then turn right onto Stump Bridge Road, go for .08 miles and property is on your right. At 2173C Stump Bridge Road.

Directional Map

Denman Ferguson
601.214.6433
4 Corner Properties, LLC
577 Hwy 51 Suite A
Ridgeland, MS 39157
denman@4cornerproperties.com

