

Mobile: 601-540-7240
Joseph@4CornerProp.com
www.MSLandPro.com
www.4CornerProp.com



Call Joseph Today!!!
Main: 601-952-2828
Fax: 601-952-2829
Land Specialist!

- 68 Acres Madison, County, MS!
- Paved Road Frontage on Shrock Road!
- House Pad Overlooking Pond, water and electricity on Property!
- 2 Ponds on Property!
- Loaded with Mature Hardwoods, Pines and open Pasture land!
- Storage Shed, Barn and Pole Barn on Property!
- Only 20 Minutes from Canton, MS!
- Great Deer and Turkey Hunting!
- This is a must see tract!!!!!!



OUTSTANDING MADISON COUNTY RECREATIONAL/ ESTATE PROPERTY



Have you been looking for a great recreational property that has all utilities to build your weekend get-a-way? Well look no further. This 76.18 acre tract in Madison County, MS has just that. This tract has beautiful hardwood bottoms and also pine trees that offer great cover for the wildlife. This property has great deer and turkey hunting on it and also is abundant with small game. The seller has a pad build for your cabin or metal building overlooking the 2 acre pond with water and electricity already ran to the pad. This property has beautiful rolling pasture land with gorgeous views. Don't miss out on this tract. Call Joseph today!!



JOSEPH PRESLEY
Realtor®, Land Specialist
4 Corner Properties, LLC
855 South Pear Orchard Road
Ridgeland, MS 39157





 **4 CORNER**
PROPERTIES • LLC
601.952.2828 • www.4cornerprop.com

Joseph Presley
Realtor®,
Land Specialist
Mobile 601-540-7240
JPresley@4CornerProp.com



Aerial Map

 **4 CORNER**
PROPERTIES • LLC
601.952.2828 ▪ www.4cornerprop.com

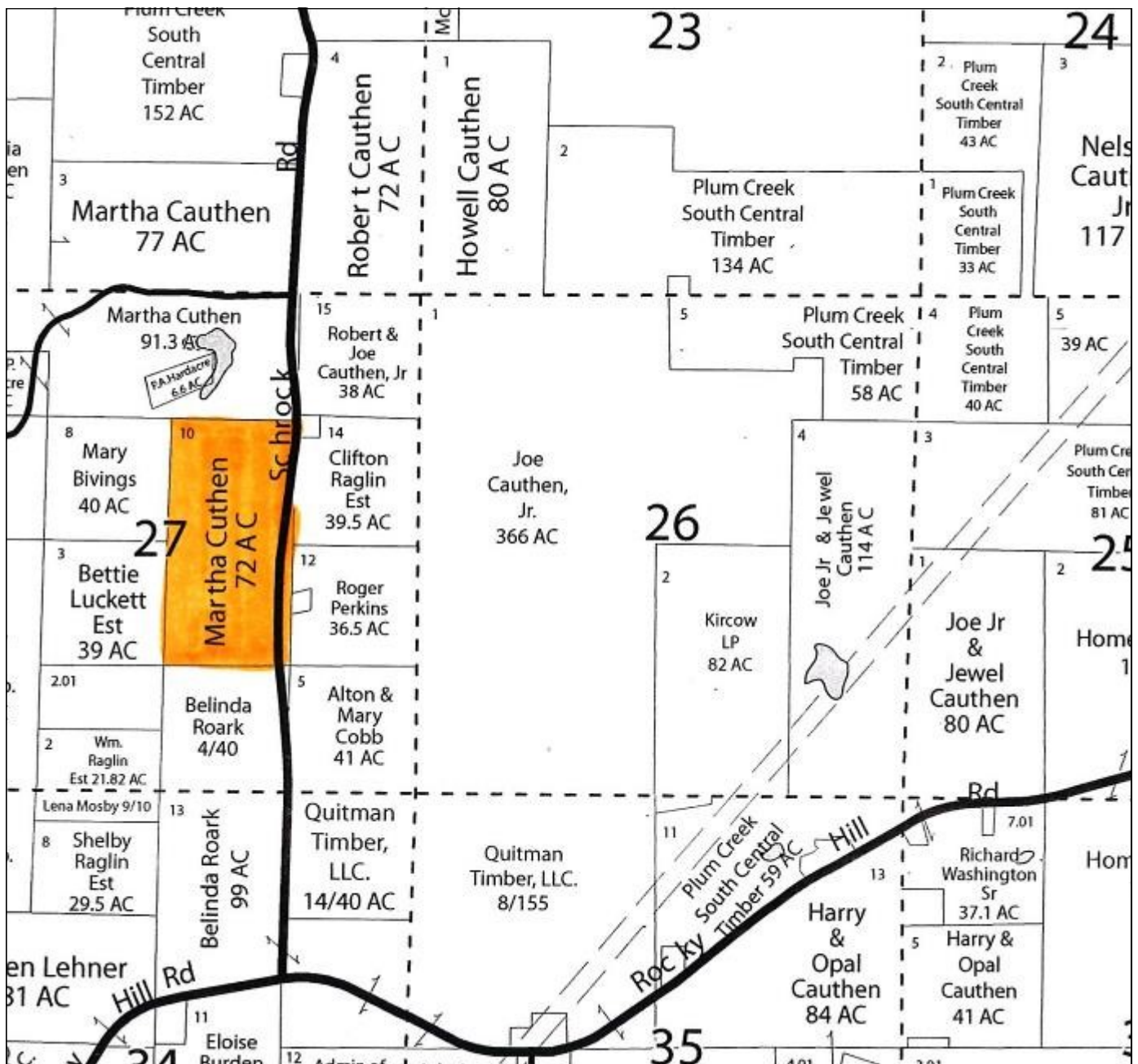
Joseph Presley
Realtor®,
Land Specialist
Mobile 601-540-7240
JPresley@4CornerProp.com



Topo Map

 **4 CORNER**
PROPERTIES • LLC
601.952.2828 ▪ www.4cornerprop.com

Joseph Presley
Realtor®,
Land Specialist
Mobile 601-540-7240
JPresley@4CornerProp.com



Ownership Map



 601.952.2828 ▪ www.4cornerprop.com

Joseph Presley
 Realtor®,
 Land Specialist
 Mobile 601-540-7240
 JPresley@4CornerProp.com