



Mark Shorter, REALTOR®

(601)966-2835

Shorter@4cornerprop.com

4 CORNER
PROPERTIES • LLC

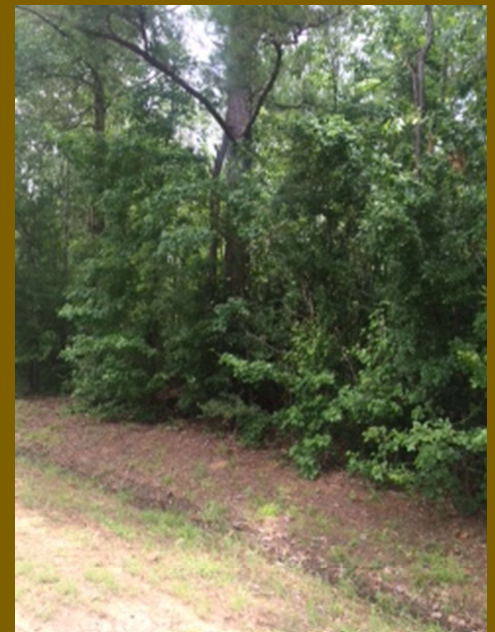
577 Hwy 51, Suite A ■ Ridgeland, MS 39157
601.952.2828 ■ www.4cplandandhomes.com



***35 Acres
St Johns Road
Braxton, MS 39044***

- Located in Rankin County
- Great Investment Tract
- Quiet, secluded
- Convenient to Jackson
- Great for hunting or a weekend getaway

Easy to find: Take Hwy. 49 South towards Braxton,
Take Cox Road to St. Johns Road, Turn left and property
Will be on the right.



Priced at \$140,000