



PERFECT WEEKEND RETREAT OR HOME PLACE!!!



- ◆ **18.31 acres+/- of year around family fun with all types of hunting**
- ◆ **Located in East Amite Co. at 6524 Hwy 24, Liberty, MS**
- ◆ **Will Divide, Double road frontage, House, Barn, loaded w/ Mature Timber!!!**
- ◆ **Priced only @ \$169,000.00.....This is a MUST SEE! DON'T WAIT!**



G.W. Stewart, REALTOR®
gwstewart@4cornerprop.com
601.757.3009 cell
601-510-9446 efax

4 Corner Properties, LLC (4CP)
77 Hwy 84E, Ste. A
Brookhaven, MS 39601
601-952-2828 office

Miss-Lou Land PRO... visit us at 4cornerprop.com



Amite 18.3

6524 Hwy 24, Liberty, MS 39645
S30, T3N, R6E, Amite County, MS

Legend

- Amite 18.3
- Feature 1

Thompson

570

Smithdale Rd

Summit

N Locust St

44
McComb



Subject Tract

Magnolia



Google earth

© 2016 Google

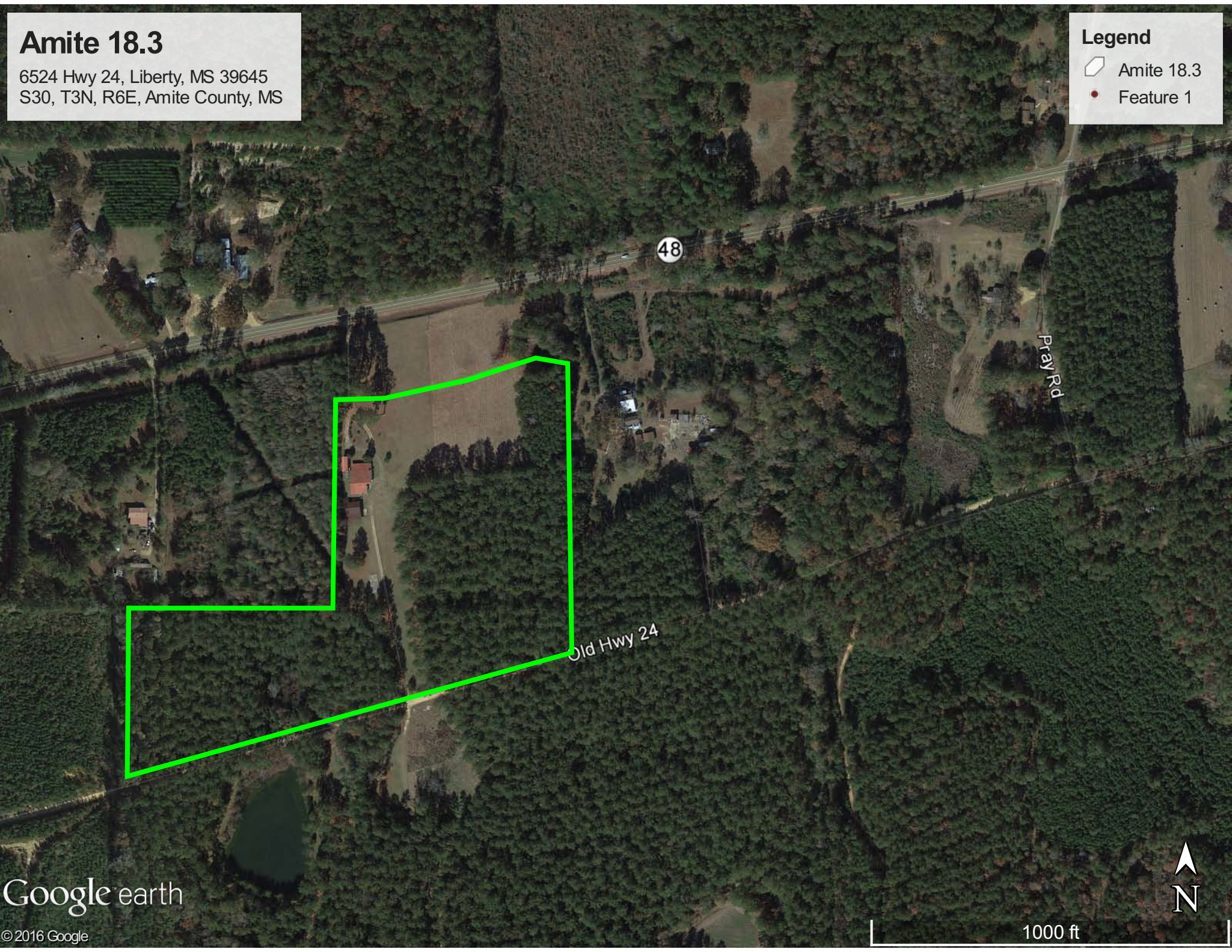
5 mi

Amite 18.3

6524 Hwy 24, Liberty, MS 39645
S30, T3N, R6E, Amite County, MS

Legend

- Amite 18.3
- Feature 1

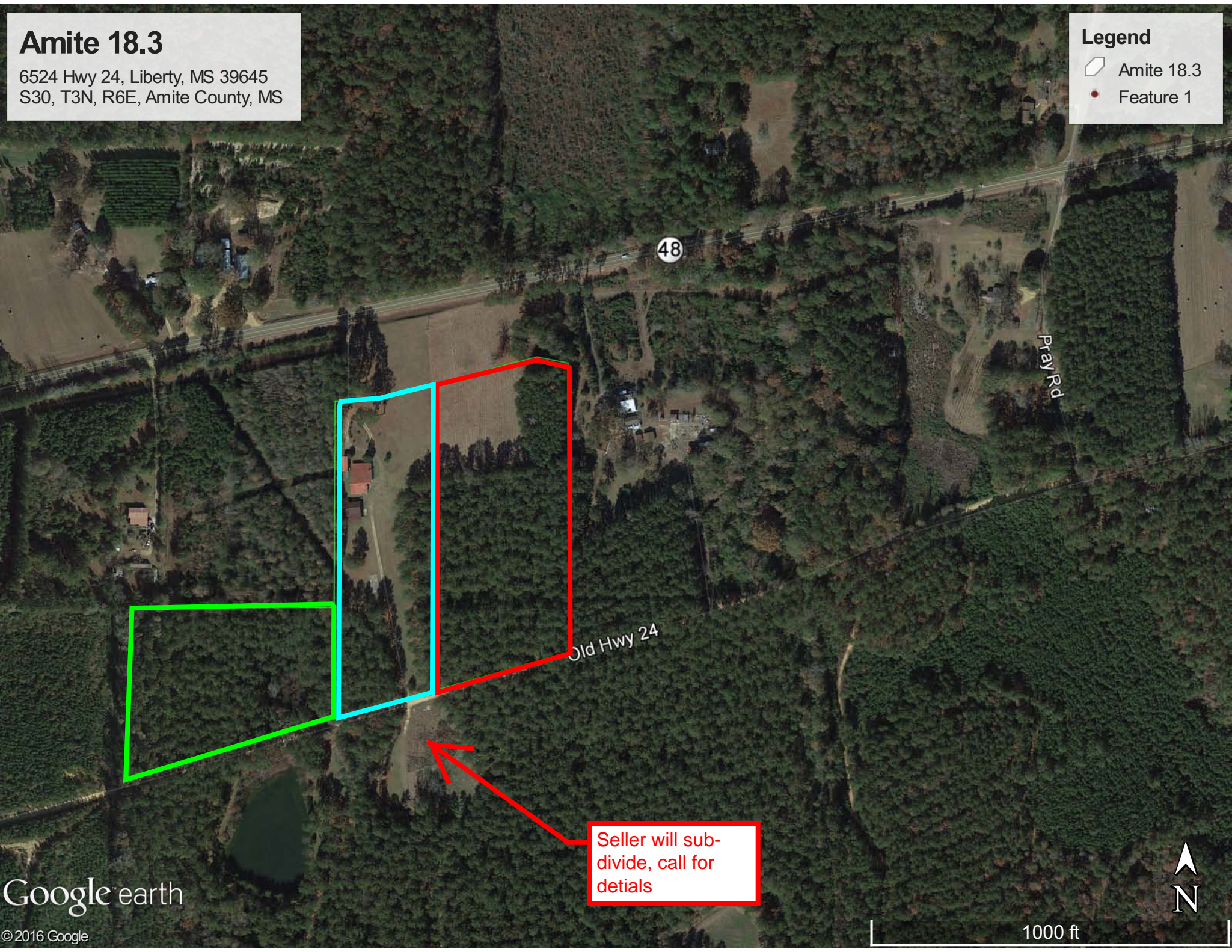


Amite 18.3

6524 Hwy 24, Liberty, MS 39645
S30, T3N, R6E, Amite County, MS

Legend

- Amite 18.3
- Feature 1



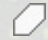

Seller will subdivide, call for details

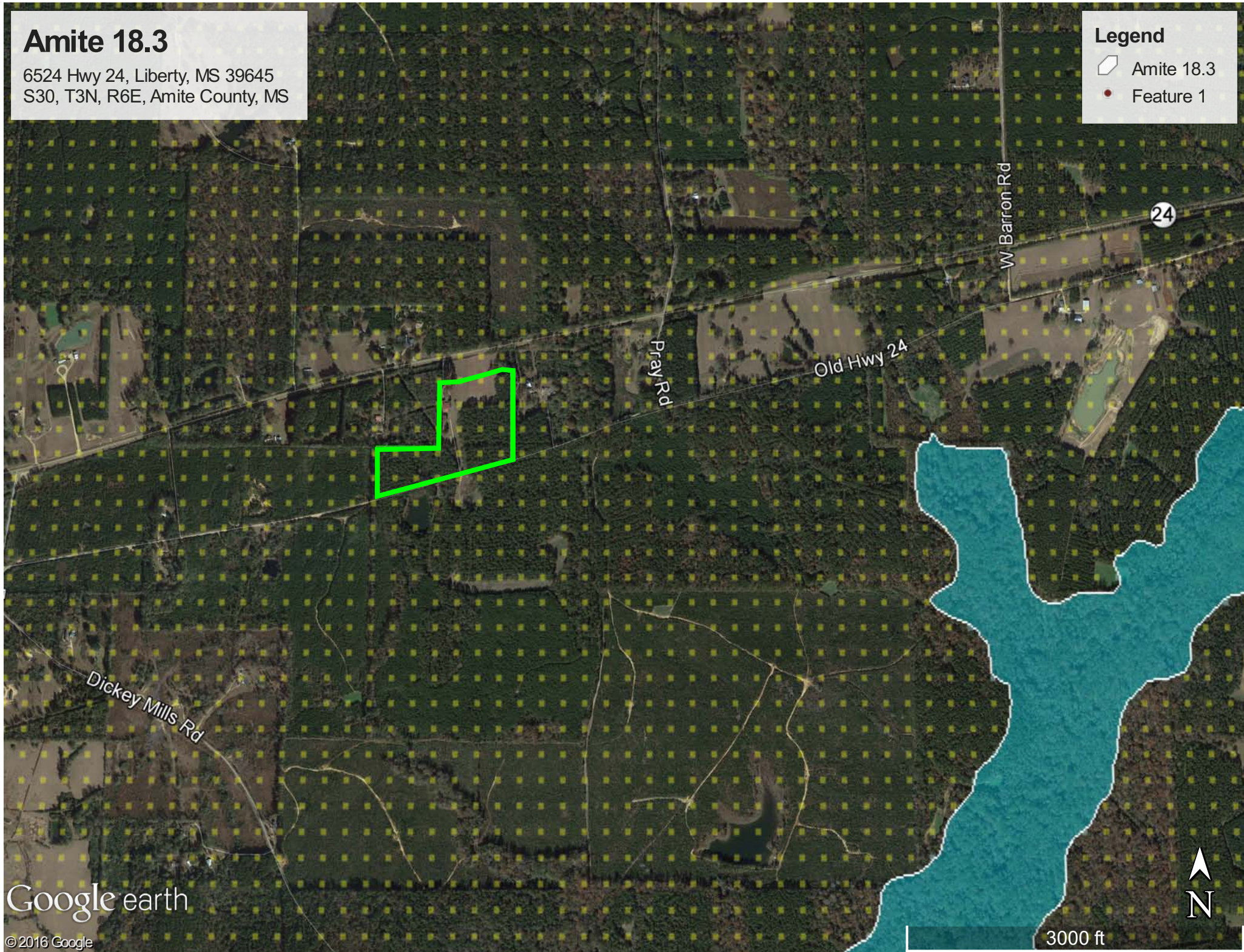


Amite 18.3

6524 Hwy 24, Liberty, MS 39645
S30, T3N, R6E, Amite County, MS

Legend

-  Amite 18.3
-  Feature 1



Google earth

© 2016 Google



3000 ft

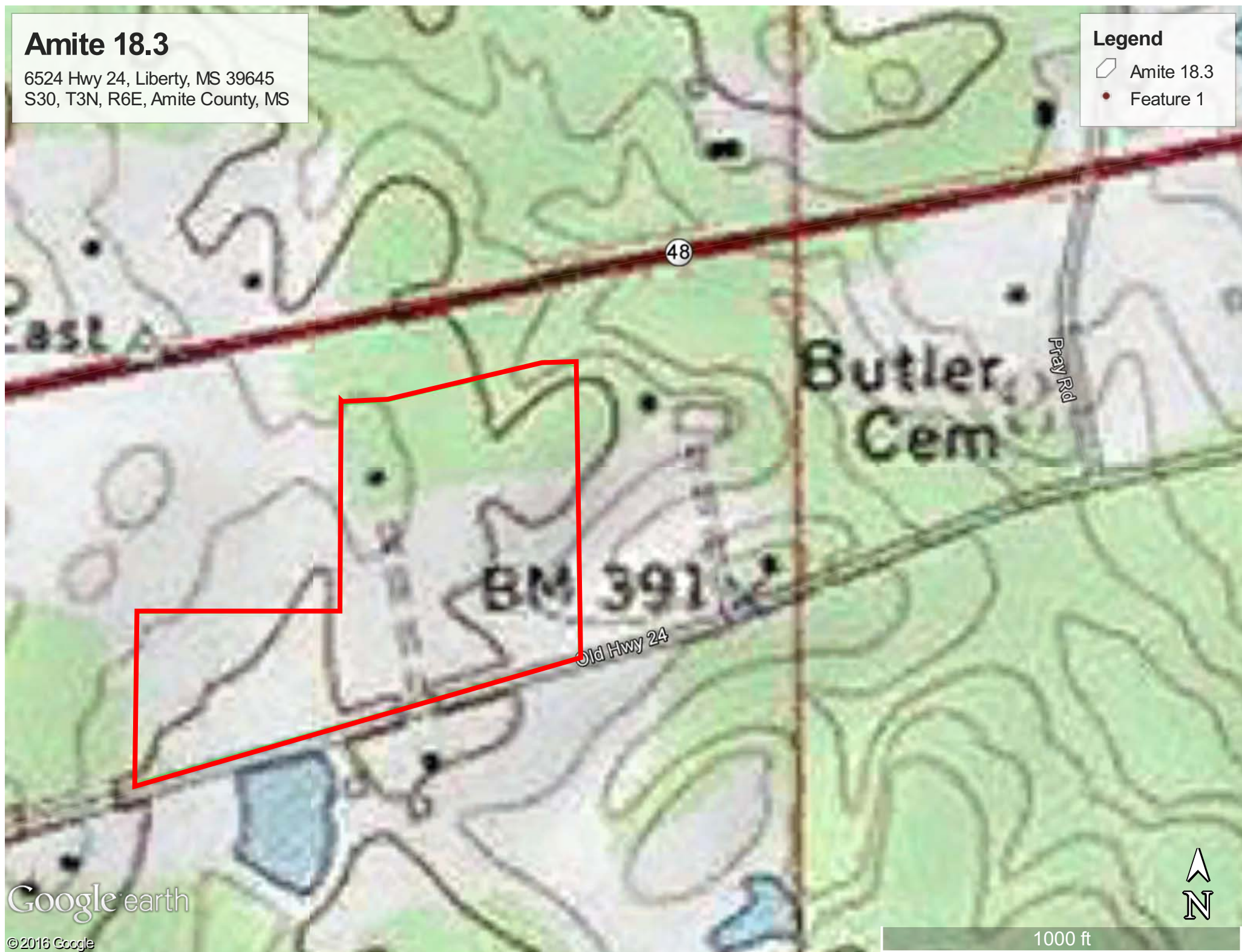
N

Amite 18.3

6524 Hwy 24, Liberty, MS 39645
S30, T3N, R6E, Amite County, MS

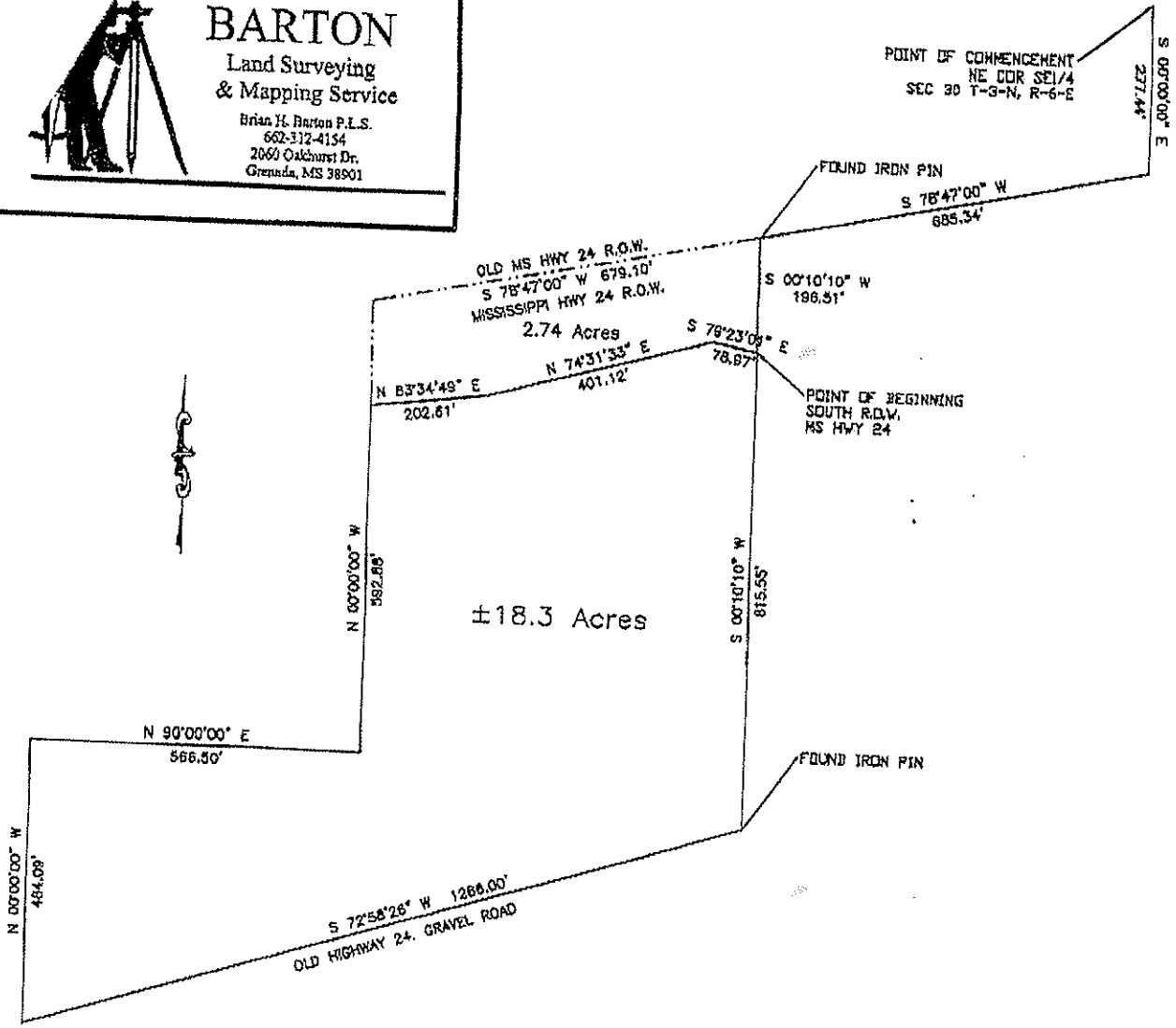
Legend

-  Amite 18.3
-  Feature 1





BARTON
 Land Surveying
 & Mapping Service
 Brian H. Barton P.L.S.
 662-312-4154
 2060 Oakhurst Dr.
 Grenada, MS 38901



Commencing at a Found Iron Pin at the North East Corner of the Southeast Quarter of Section 30 Township 3 North, Range 6 East, Amite County, Mississippi; Thence South a distance of 277.44'; Thence S 78°47'00" W a distance of 685.34' to a Found Iron Pin At a Fence Corner; Thence S 00°10'10" W a distance of 196.51' to a Set Iron Pin on the South Right-of-Way for Mississippi Highway 24 and The POINT OF BEGINNING for this description; Thence S 00°10'10" W a distance of 815.55' to a Found Iron Pin on the North Right-of-Way for Old Highway 24; Thence S 72°58'26" W along Old 24 Right-of-Way a distance of 1286.00' to a Set Iron Pin; Thence North a distance of 484.09' to a Set Iron Pin in a Fence Line; Thence East a distance of 566.50' to a Fence Corner; Thence North a distance of 592.88' to a Set Iron Pin on the South Right-of-Way for Mississippi Highway 24; Thence N 83°34'49" E along Said Right-of-Way a distance of 202.61' to a Found Metal Post; Thence N 74°31'33" E along said Right-of-Way a distance of 401.12' to a Set Iron Pin; Thence S 79°23'01" E along Said Right-of-Way a distance of 78.97' to a Set Iron Pin; which is the point of beginning.

All being ±18.3 Acres in the Southeast Quarter of Section 30, Township 3 North, Range 6 East, Amite County, Mississippi.

SURVEYORS NOTE:

BEARINGS BASED ON GPS MEASUREMENT

MEETS ALL MINIMUM REQUIREMENTS FOR CLASS "B" SURVEY

Barton Land Surveying		
DRAWN BHB	DATE 9-9-14	MAP & DESCRIPTION FOR MCPHAIL AMITE CO
APPROVED BHB	DATE 9-9-14	
SCALE 1" = 300'	SHEET 1 OF 1	PROJECT NO. 14-HWY24AMITECO