



READY-TO-GO HUNTING PARADISE!



- ◆ *40 acres+/- of year around family fun with all types of hunting*
- ◆ *Located in SE Copiah County, MS at 4170 Beasley Rd, Wesson, MS*
- ◆ *Interior road system w/ established food plots w/ ponds & creek, Mature Timber!!!*
- ◆ *Priced only @ \$118,000.00.....This is a MUST –SEE! DON'T WAIT!*



G.W. Stewart, REALTOR®
gwstewart@4cornerprop.com
601.757.3009 cell
601-510-9446 efax

4 Corner Properties, LLC (4CP)
77 Hwy 84E, Ste. A
Brookhaven, MS 39601
601-952-2828 office

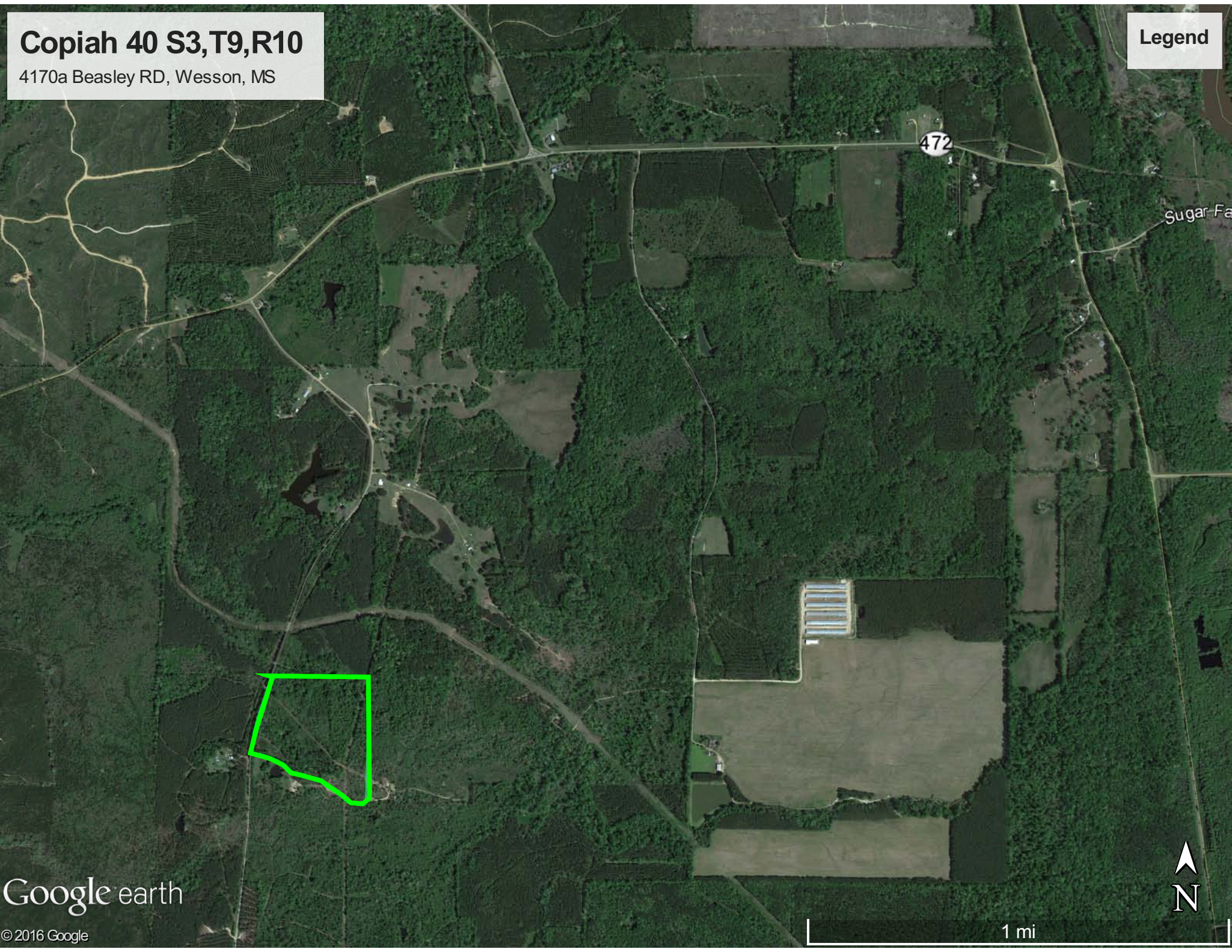
Miss-Lou Land PRO... visit us at 4cornerprop.com



Copiah 40 S3,T9,R10

4170a Beasley RD, Wesson, MS

Legend



Google earth

© 2016 Google



1 mi

Copiah 40 S3,T9,R10

4170a Beasley RD, Wesson, MS

Legend

- Noxapater
- Winston 44

Google earth

© 2016 Google

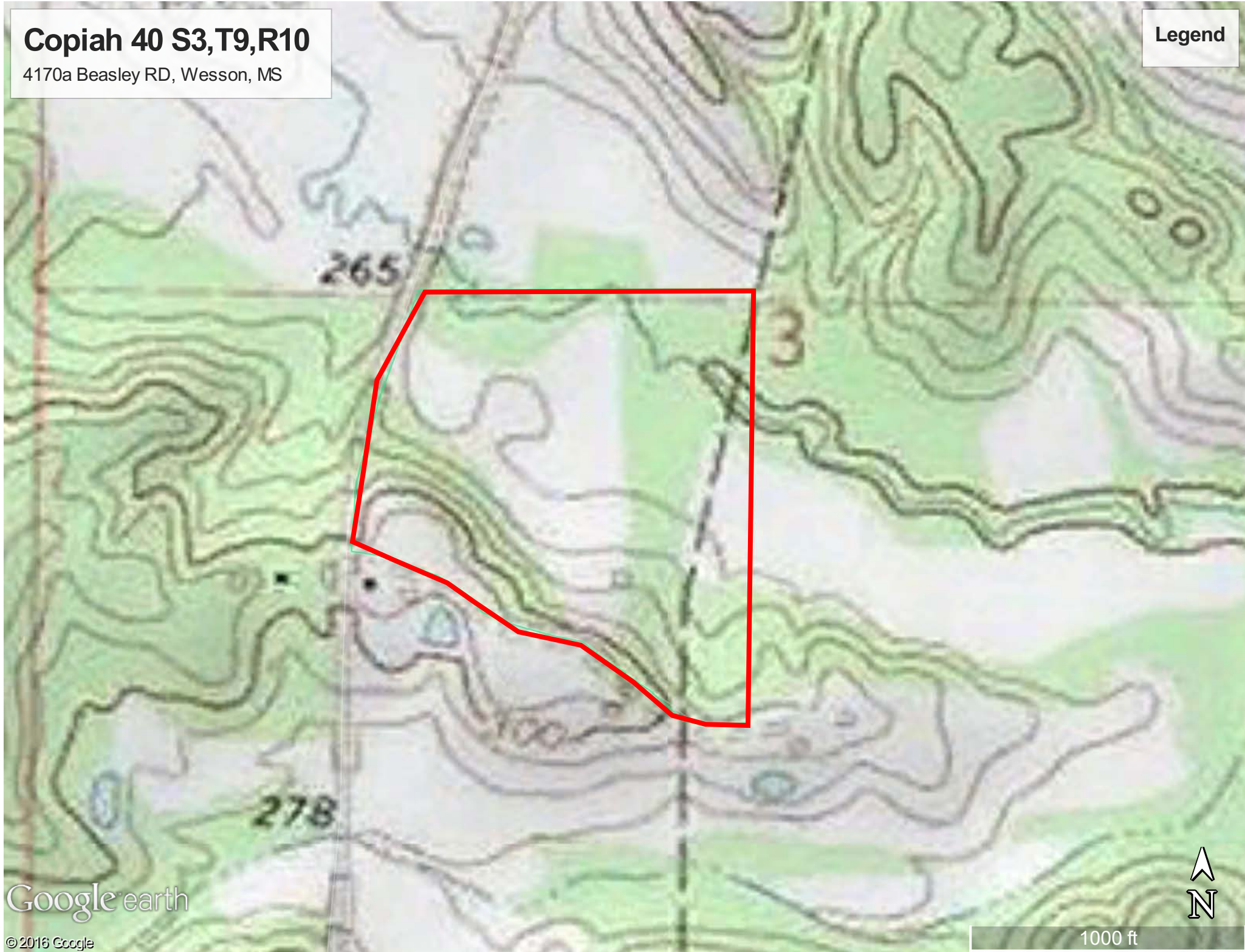


2000 ft

Copiah 40 S3,T9,R10

4170a Beasley RD, Wesson, MS

Legend



Google earth

© 2016 Google



1000 ft