



READY-TO-GO HUNTING PARADISE!



- ◆ *160 acres+/- of year around family fun with all types of hunting*
- ◆ *Located in SE Copiah County, MS at 4170 Beasley Rd, Wesson, MS*
- ◆ *Interior road system w/ established food plots w/ ponds & creek, READY-TO-GO!*
- ◆ *Priced only @ \$392,000.00.....This is a MUST –SEE! DON'T WAIT!*



G.W. Stewart, REALTOR®
gwstewart@4cornerprop.com
601.757.3009 cell
601-510-9446 efax

4 Corner Properties, LLC (4CP)
77 Hwy 84E, Ste. A
Brookhaven, MS 39601
601-952-2828 office

Miss-Lou Land PRO... visit us at 4cornerprop.com











***ALL Deer Stands WILL
Remain with the property!!!***

Copiah 160 S3/10,T9,R10

4170b Beasley RD, Wesson, MS

Legend

Simpson Highway 28 W

Georgetown

Pearl River



Copiah 160 S3/10,T9,R10

4170b Beasley RD, Wesson, MS

Legend

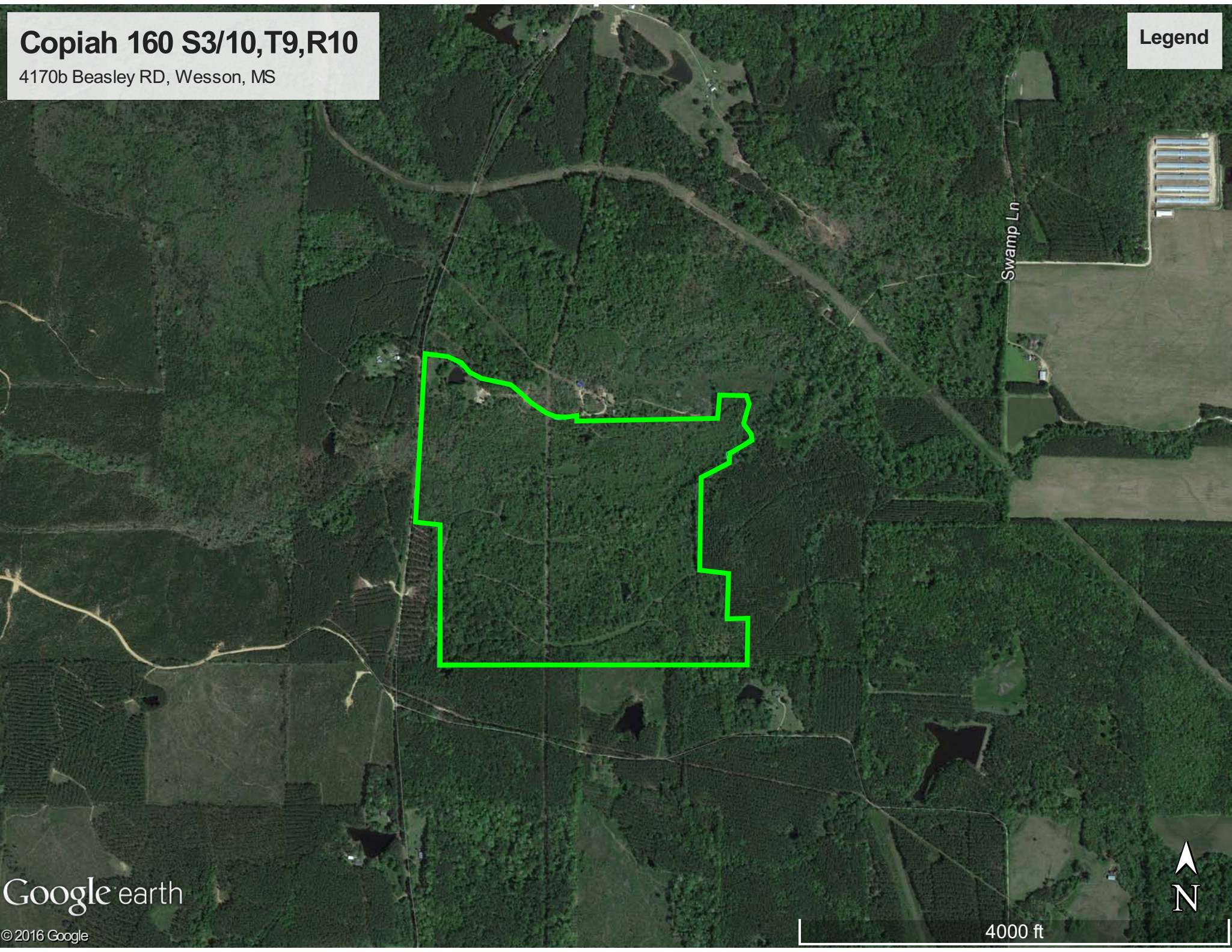
Swamp Ln

Google earth

© 2016 Google



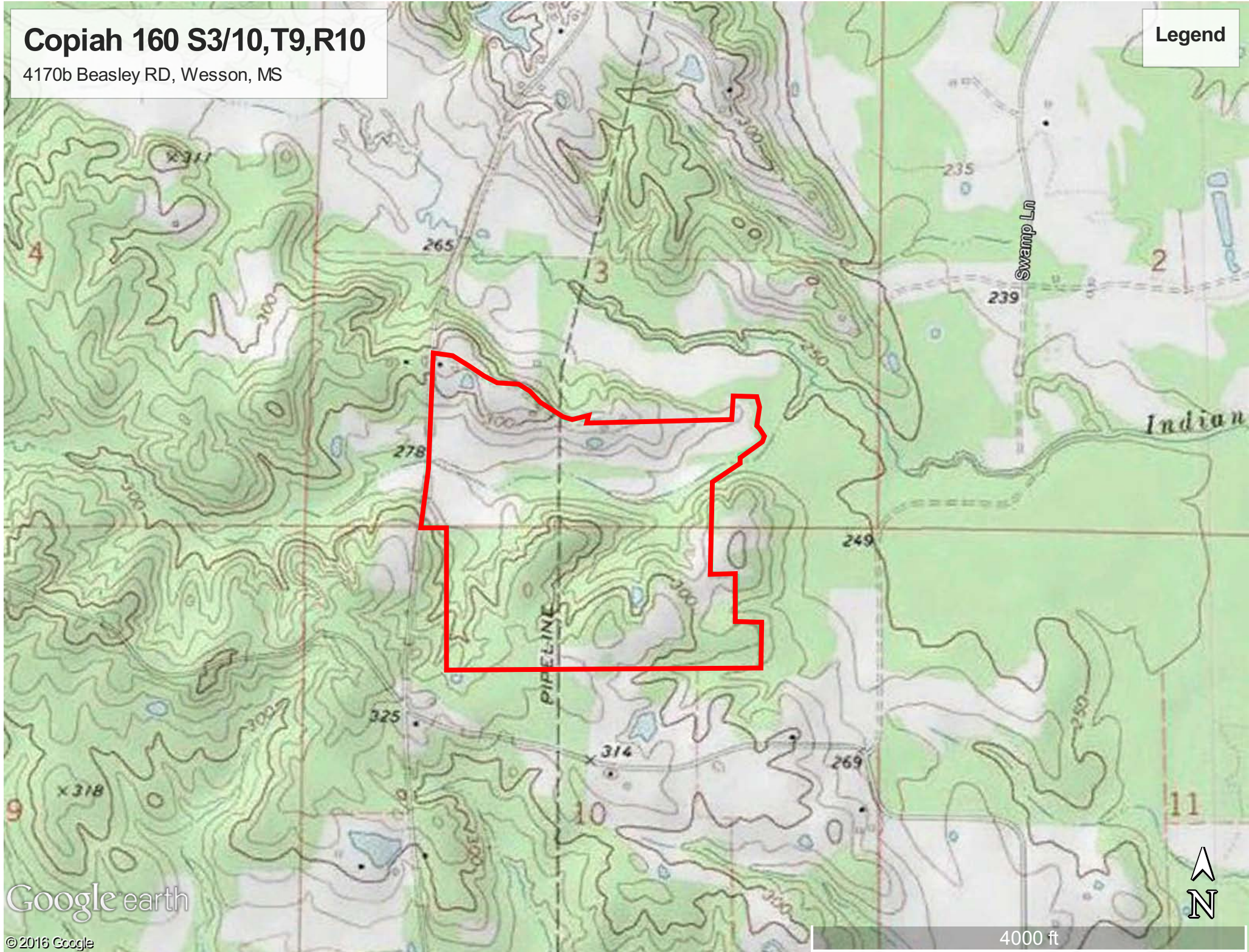
4000 ft



Copiah 160 S3/10,T9,R10

4170b Beasley RD, Wesson, MS

Legend



Google earth

© 2016 Google

4000 ft