

Denman Ferguson
601-214-6433
4 Corner Properties, LLC
577 Hwy 51 Suite A
Ridgeland, MS 39157
denman@4cornerprop.com



Cell: 601-214-6433
Office: 601-952-2828
Fax: 601-510-9446

MADISON COUNTY HOME AND LAND *1266 ROCKY HILL ROAD*

- 6 Acre Country Home Place
- 2 Large Bedrooms and 2 Baths
- Large Sunroom and Laundry
- Country Living at it's Best
- Beautiful Yard with Full Front Porch
- Separate Covered Deck and Fire Pit
- Abundant Deer and Turkey
- 16 X 16 Storage Shed
- Large Master Bedroom and Closet
- 2454 Sq Ft Brick Home Built 1993



North Madison County Rural Home and Land: 2454 sq ft home sitting on 6 acres in North Madison county. Home has 2 large bedrooms and 2 large bathrooms, with a sunroom, 2 car carport, laundry, storage rooms and a 16 x 16 utility shed, yard swing, covered deck, fire pit. You can view deer and turkey in your own backyard. This property is priced to sell so call for your private showing today. Call Denman Ferguson 601-214-6433

Directions: From Hwy 17 and Hwy 51 just south of Pickens, MS take Hwy 17 east for 3.8 miles and turn left onto Rocky Hill Road, go for 1.3 miles and property will be on your right.



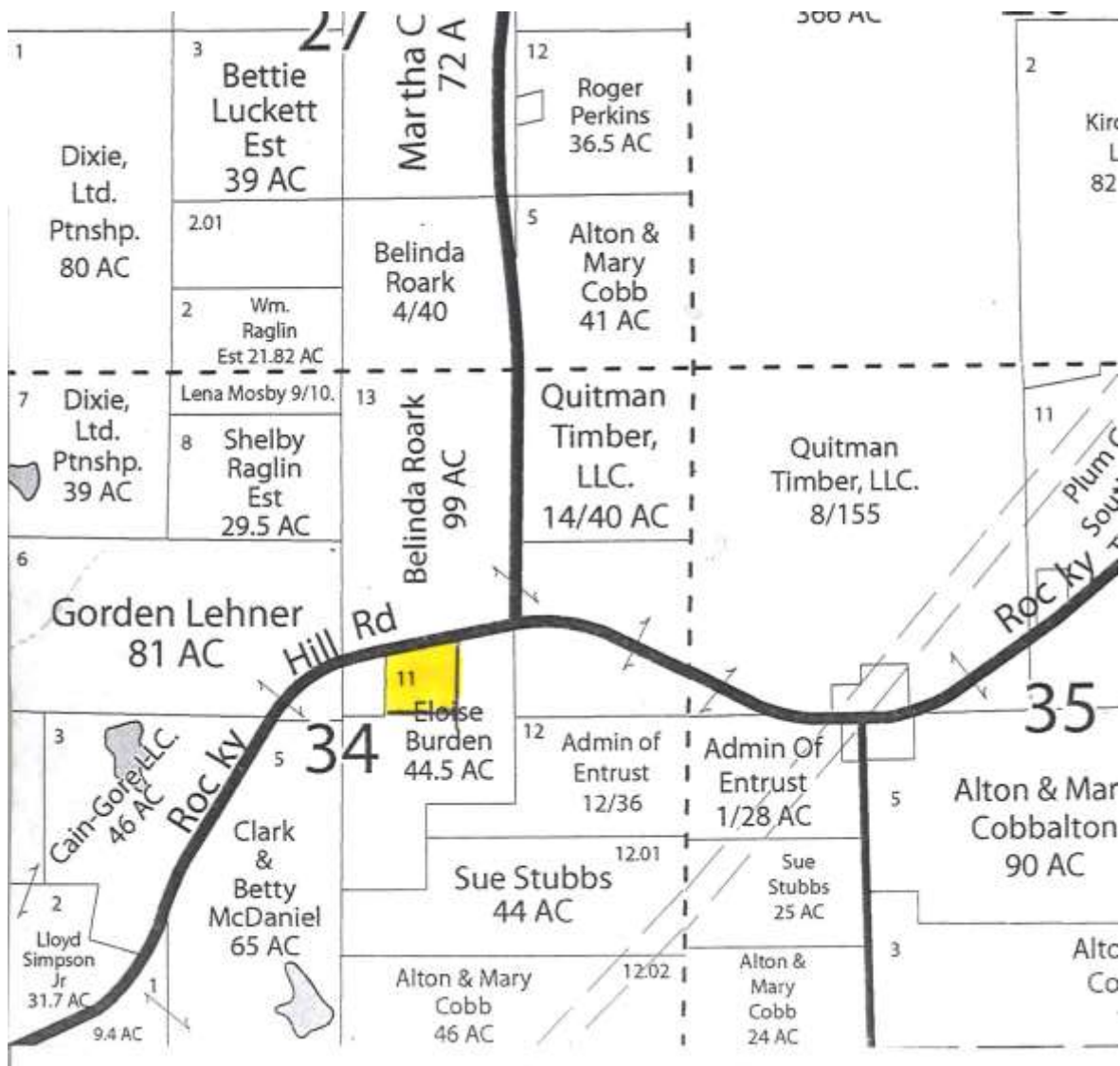
Denman Ferguson
601-214-6433
4 Corner Properties, LLC
577 Hwy 51 Suite A
Ridgeland, MS 39157
denman@4cornerprop.com





Denman Ferguson
 601-214-6433
 4 Corner Properties, LLC
 577 Hwy 51 Suite A
 Ridgeland, MS 39157
denman@4cornerprop.com





Ownership



Denman Ferguson
 601-214-6433
 4 Corner Properties, LLC
 577 Hwy 51 Suite A
 Ridgeland, MS 39157
denman@4cornerprop.com



Aerial Photo



Denman Ferguson
601-214-6433
4 Corner Properties, LLC
577 Hwy 51 Suite A
Ridgeland, MS 39157
denman@4cornerprop.com



Directional Map

Directions: From Hwy 17 and Hwy 51 just south of Pickens, MS take Hwy 17 east for 3.8 miles and turn left onto Rocky Hill Road, go for 1.3 miles and property will be on your right.



Denman Ferguson
 601-214-6433
 4 Corner Properties, LLC
 577 Hwy 51 Suite A
 Ridgeland, MS 39157
denman@4cornerprop.com