

Denman Ferguson
601-214-6433
4 Corner Properties, LLC
577 Hwy 51 Suite A
Ridgeland, MS 39157
denman@4cornerprop.com



Cell: 601-214-6433
Office: 601-952-2828
Fax: 601-510-9446

RESIDENTIAL ACRAGE IN THE COUNTRY 11 ACRES, MADISON COUNTY, MS

- 11 Acre Residential Home site
- Private Rural Area
- Close to Madison and Ridgeland Shopping
- Enjoy Gorgeous Sunsets
- Tillable Land that is Slightly Sloping
- Property Backs up to the Natchez Trace Parkway
- Convenient to the Ridgeland Bike Trail
- Great Tract for a Start Up Horse Farm
- Currently Producing a Hay Crop



Madison County, Residential Acreage in the Country! Located 2 miles off Livingston Road on Rouse Road, Very pretty sloping land that adjoins the Natchez Trace Parkway property to the south. Currently produces a hay crop several times a year, this tract would be perfect for a home or horse / cattle operation. Large hardwoods on north and east side provide a beautiful setting and also holds an abundance of wildlife.

Directions: From intersection of Livingston Road and the Natchez Trace Parkway, go under the Trace and turn left onto Rouser Road, drive for 2 miles and property is on your left .



Denman Ferguson
601-214-6433
4 Corner Properties, LLC
577 Hwy 51 Suite A
Ridgeland, MS 39157
denman@4cornerprop.com

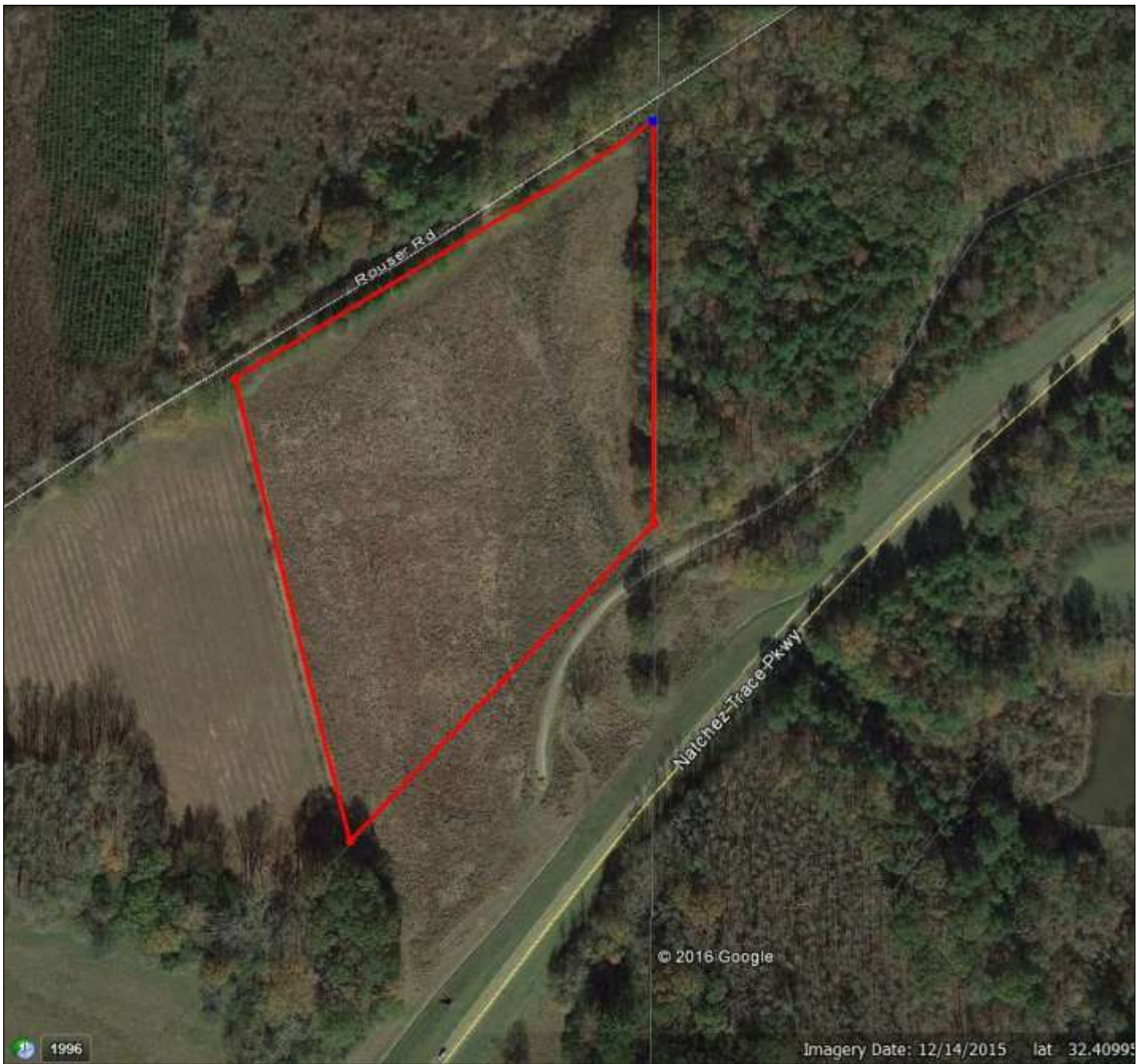


Information is Believed to be Accurate but not Guaranteed



Denman Ferguson
601-214-6433
4 Corner Properties, LLC
577 Hwy 51 Suite A
Ridgeland, MS 39157
denman@4cornerprop.com

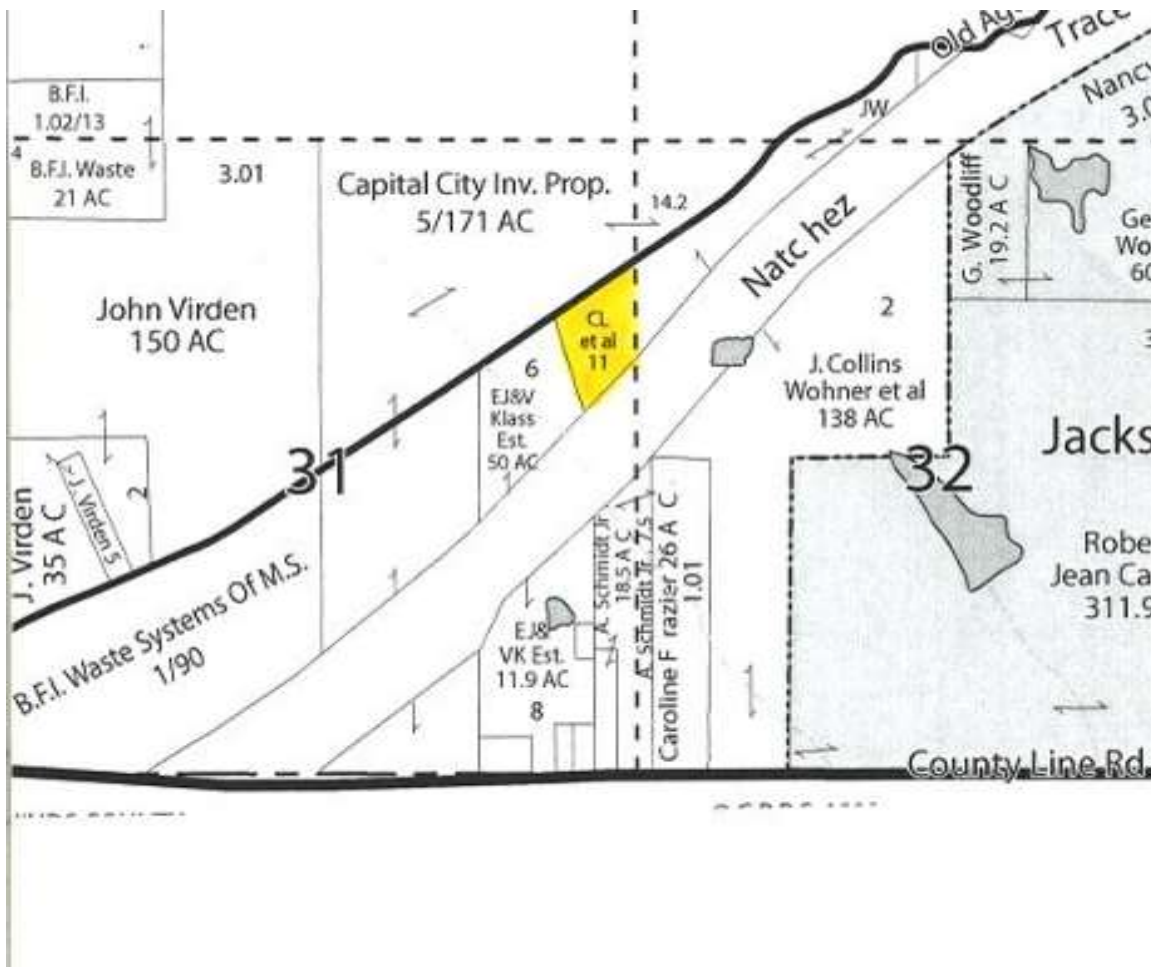




Aerial Photo



Denman Ferguson
601-214-6433
4 Corner Properties, LLC
577 Hwy 51 Suite A
Ridgeland, MS 39157
denman@4cornerprop.com



Ownership Map



Denman Ferguson
 601-214-6433
 4 Corner Properties, LLC
 577 Hwy 51 Suite A
 Ridgeland, MS 39157
 denman@4cornerprop.com



Directional Map

Directions: From intersection of Livingston Road and the Natchez Trace Parkway, go under the Trace and turn left onto Rouser Road, drive for 2 miles and property is on your left.



Denman Ferguson
601-214-6433
4 Corner Properties, LLC
577 Hwy 51 Suite A
Ridgeland, MS 39157
denman@4cornerprop.com