



*THE PERFECT FAMILY MINI-FARM AWAITS YOU!!!*



- ◆ *20.40 acres of rolling pasture with pines and hardwoods on creek*
- ◆ *Located in Copiah County, MS at 2032 Perrett Rd just east of Hazlehurst*
- ◆ *Road frontage, Fenced, Excellent Pasture, and Timber*
- ◆ *Priced only @ \$77,52000 (\$3800/ac),.....all me for details TODAY!*



G.W. Stewart, REALTOR®  
gwstewart@4cornerprop.com  
601.757.3009 cell  
601-510-9446 efax

4 Corner Properties, LLC (4CP)  
855 S. Pear Orchard Road Ste.401  
Ridgeland, MS 39157  
601-952-2828 office

Miss-Lou Land PRO... visit us at [mslandpro.com](http://mslandpro.com)






# Copiah 20.40

2032 Perrett Co, MS S11/12, T10N, R8E, Copiah Co, MS

## Legend

 Copiah 71.48

Google earth

© 2016 Google

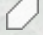


1 mi

# Copiah 20.40

2032 Perrett Co, MS S11/12, T10N, R8E, Copiah Co, MS

## Legend

 Copiah 71.48

Wilbert Ln


Call for access,  
keep gates  
closed, horses on  
the property

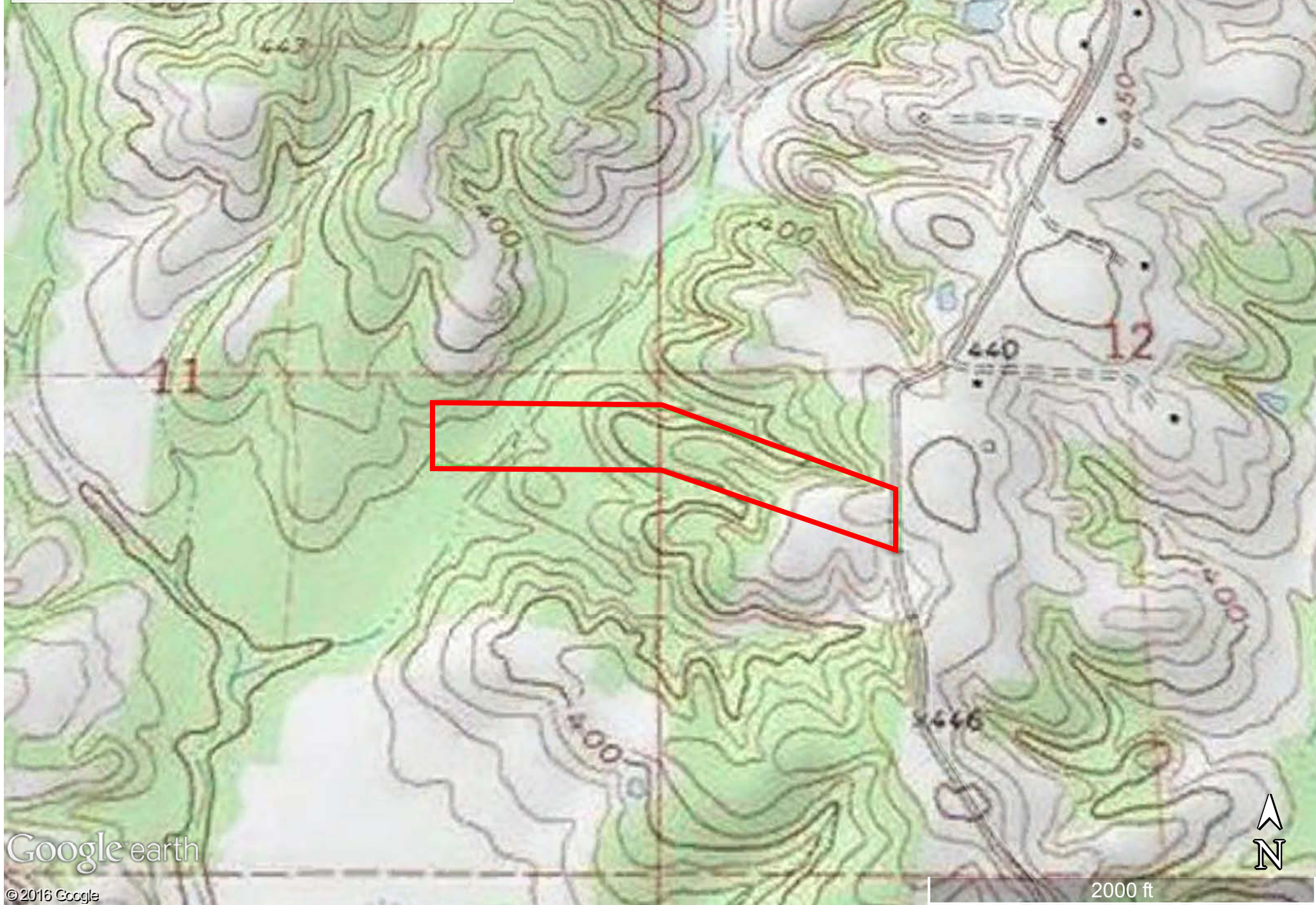


# Copiah 20.40

2032 Perrett Co, MS S11/12, T10N, R8E, Copiah Co, MS

## Legend

 Copiah 71.48



Tract 1a

20.40 acres

Tract 2a

22.40 acres

Tract 3a

28.68 acres

Mike Yarbro- 71.48 ac +/-  
Perrett Rd- 11/12-10N-8E  
Copiah Co., MS

