



THIS “SWEET “16” AC IS A MUST SEE PROPERTY!



- ◆ *16 acres of rolling hills, with pines and hardwood on Sylvarena Rd*
- ◆ *Located in Copiah County, MS in the Wesson School District*
- ◆ *Easy access with road frontage, some open land, the perfect home-site*
- ◆ *Priced only @ \$63,500.00 , call me for details TODAY!*



G.W. Stewart, REALTOR®
gwstewart@4cornerprop.com
601.757.3009 cell
601-510-9446 efax

4 Corner Properties, LLC (4CP)
855 S. Pear Orchard Road Ste.401
Ridgeland, MS 39157
601-952-2828 office

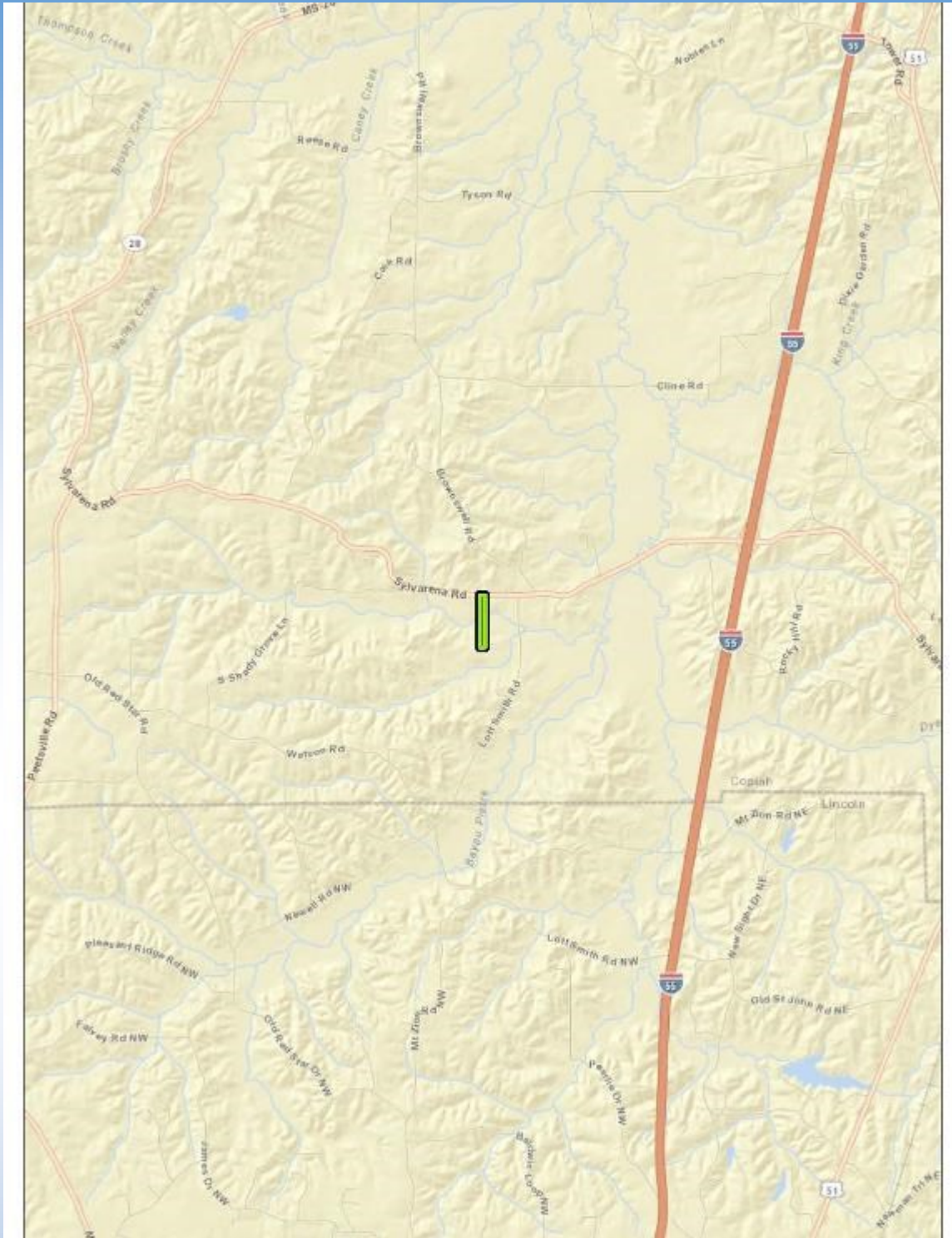
Miss-Lou Land PRO... visit us at mslandpro.com











G.W. Stewart, REALTOR®
gwstewart@4cornerprop.com
601.757.3009 cell
601-510-9446 efax

4 Corner Properties, LLC (4CP)
855 S. Pear Orchard Road Ste.401
Ridgeland, MS 39157
601-952-2828 office

Miss-Lou Land PRO... visit us at mslandpro.com