

**Call Daniel TODAY!!**

Mobile: 601.832-8500  
Office: 601.952.2828  
Fax: 601.605.4478  
dgilbert@4cornerprop.com

**Holmes County-138 acres  
Prime Hunting & Investment  
Tract!!!**



**\$2,295/acre**

- 138+/- acres, fronts Chisolm & Coxburg Roads
- Lucrative Pine Saw Timber
- Trophy White-tail Hunting Tract
- Close Proximity to Jackson
- Established Food Plots
- 7+/- acre Fishing Lake
- All utilities available
- Multiple Home/Cabin-Sites

If you're looking for a prime piece of hunting land or an exceptional timber investment, or maybe a place to build a weekend get-away cabin? Come check out this property! This area is known for quality white-tail and turkey hunting! Not to mention the added assurance of offering lucrative pine saw timber that could CUT YOUR BASIS IN HALF!!! This property also offers the enjoyment of a PRISTINE 7 acre fishing lake! This all-purpose property is simply a deal you can't pass up! Call Daniel today @ 601-832-8500!!!

**Directions:** From Exit 133 off I-55 in Vaughan, go west on Vaughan Road 1.9 miles and take right onto Bennett Rd. At the end of Bennett Rd, turn left onto Hwy 432, the take quick right onto Fox Rd. At the end of Fox Rd take left onto Swayze Home Place Rd. At the end of the road, turn right onto Hwy 433N (Hwy 14), continue 6.3 miles and turn left onto Coxburg Road, continue 2.2 miles and turn left onto Chisolm Rd. Property is on the right.



**DANIEL GILBERT**  
Land Specialist

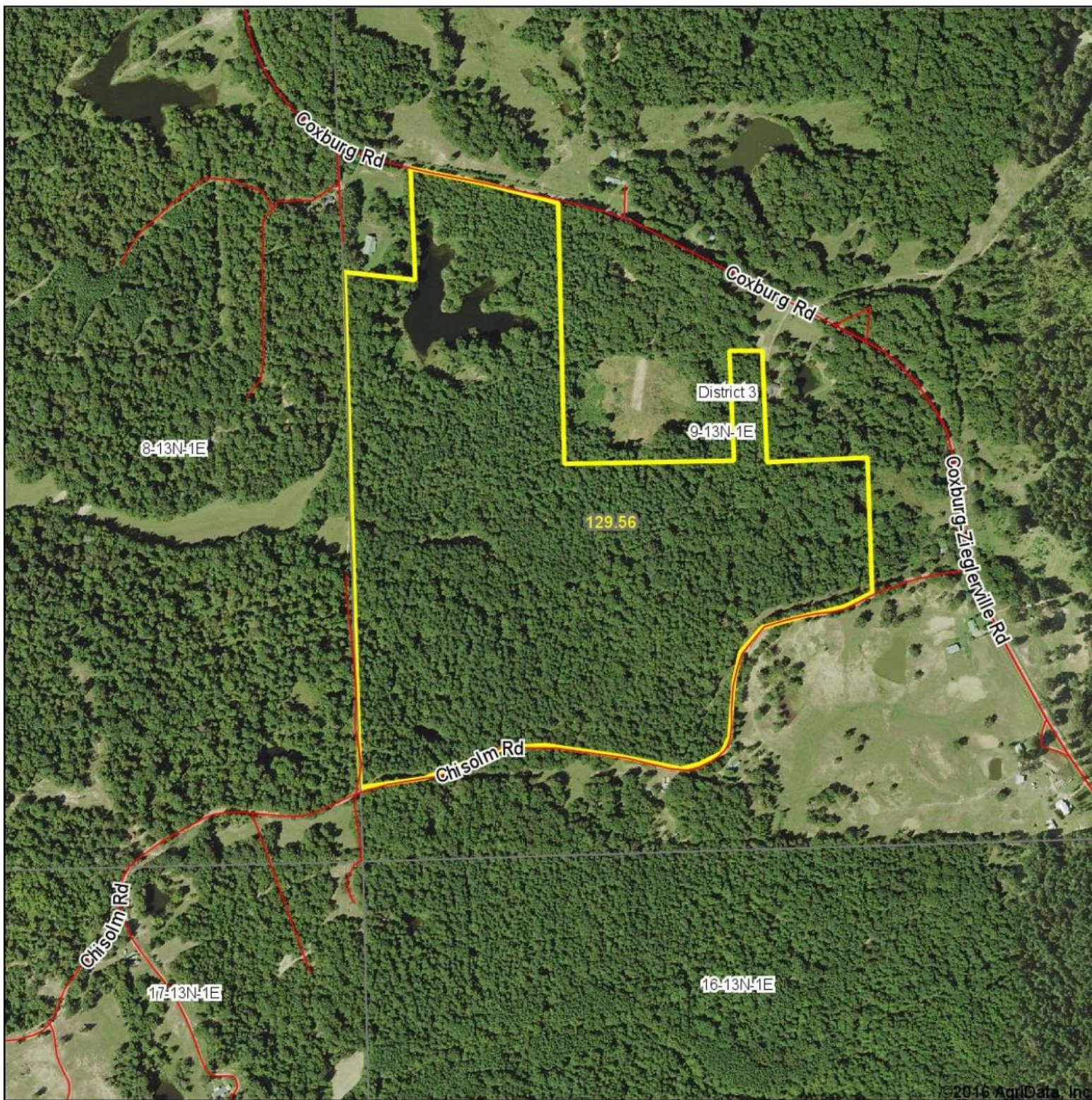
4 Corner Properties, LLC  
577 HWY 51, Suite A  
Ridgeland, MS 39157





**4 Corner Properties, LLC**  
577 HWY 51, Ste. A  
Ridgeland, MS 39157  
[www.4cornerprop.com](http://www.4cornerprop.com)

# Aerial Map



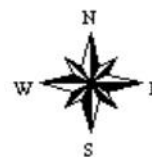
©2016 AgriData, Inc.

map center: 32° 59' 9.64, 90° 12' 20.19



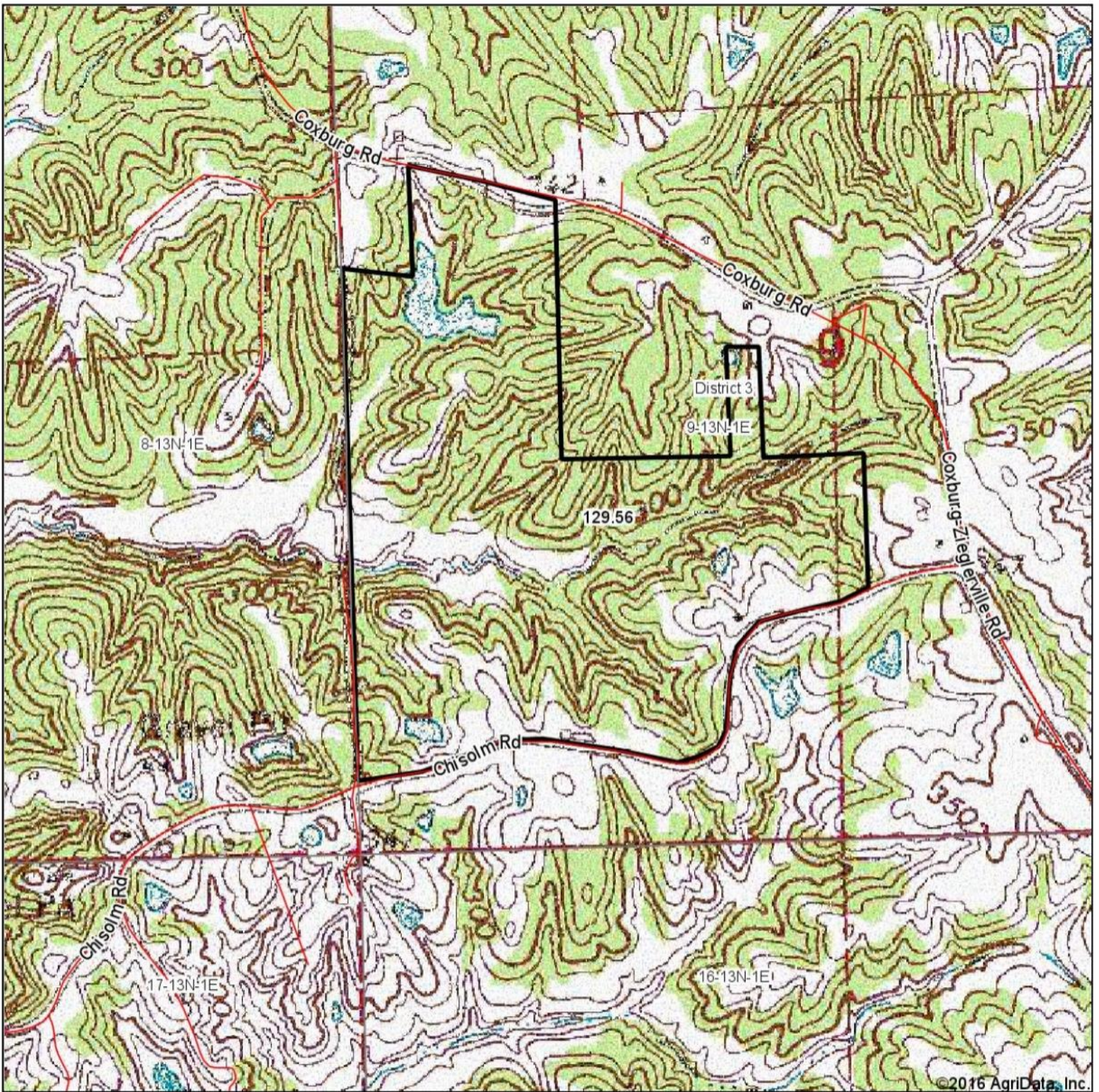
Maps Provided By:  
  
CUSTOMIZED ONLINE MAPPING  
© AgriData, Inc. 2016 www.AgriDataInc.com

**9-13N-1E**  
**Holmes County**  
**Mississippi**



3/1/2016

# Topography Map



©2016 AgriData, Inc.

map center: 32° 59' 9.64, 90° 12' 20.19



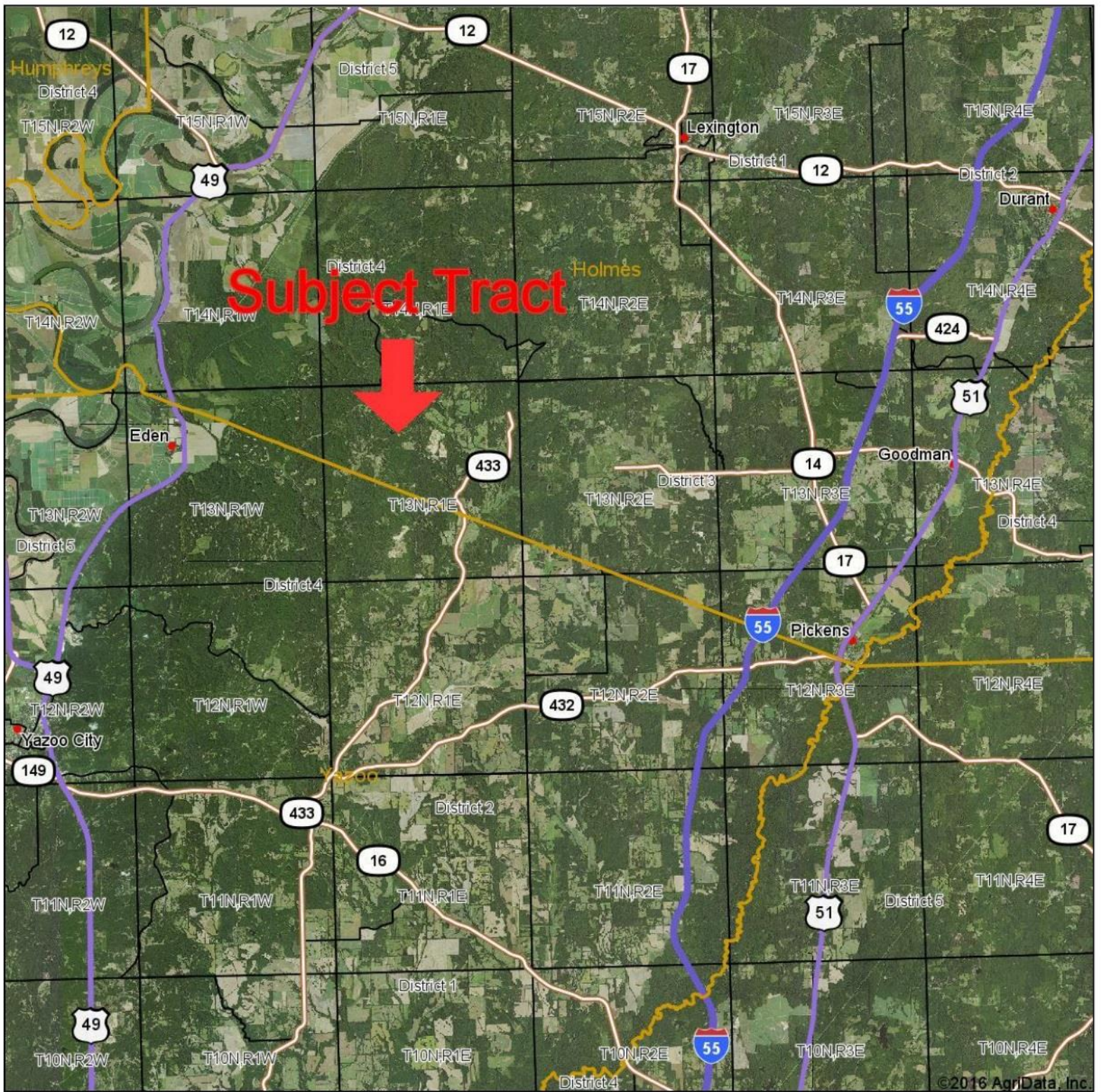
**9-13N-1E**  
**Holmes County**  
**Mississippi**



3/1/2016

Maps Provided By:  
 **surety**  
CUSTOMIZED ONLINE MAPPING  
© AgriData, Inc. 2016 [www.AgriDataInc.com](http://www.AgriDataInc.com)

# Directional Map

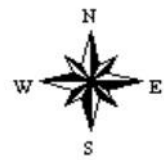


map center: 32° 56' 7.19, 90° 7' 32.27



Maps Provided By:  
**surety**  
CUSTOMIZED ONLINE MAPPING  
© AgriData, Inc. 2016 www.AgridataInc.com

**31-13N-2E**  
**Yazoo County**  
**Mississippi**



3/1/2016