

RESIDENTIAL LOT IN THE COUNTRY
10 ACRES, MADISON, COUNTY, MS

- 10 Acre Home Site
- Private area, Quiet and Peaceful
- Paved Frontage on Holmes Hollow Rd
- 15 Minutes to Madison or Canton
- Great rural Neighborhood
- Utilities are Available
- Located 1 mile off the Natchez Trace Parkway
- Hardwood and Pine Trees on Property
- Fish in the Lake and watch Gorgeous Sunsets



\$72,000



Madison County, Residential Lot in the Country! Located 3/4 of a mile off Ratliff Ferry Rd and 1 mile off the Natchez Trace, You can put your boat in at the Ratliff Ferry Landing and spend your weekends on the river. This property is private and quiet. Utilities are available at road. Property joins a 5 acre lake for your fishing enjoyment. If you are ready for your to build your dream house in the Madison County country this is it!

Directions: From Madison take the Natchez Trace Parkway and go east for 20.3 miles then make a left turn onto Ratliff Ferry Road, go 1 mile and make a slight right turn onto Holmes Hollow Road go for 1 mile look for sign property is on your left.



Denman Ferguson
 601.214.6433
 4 Corner Properties, LLC
 Highway 51 Suite A
 Ridgeland, MS 39110
 denman@4cornerprop.com

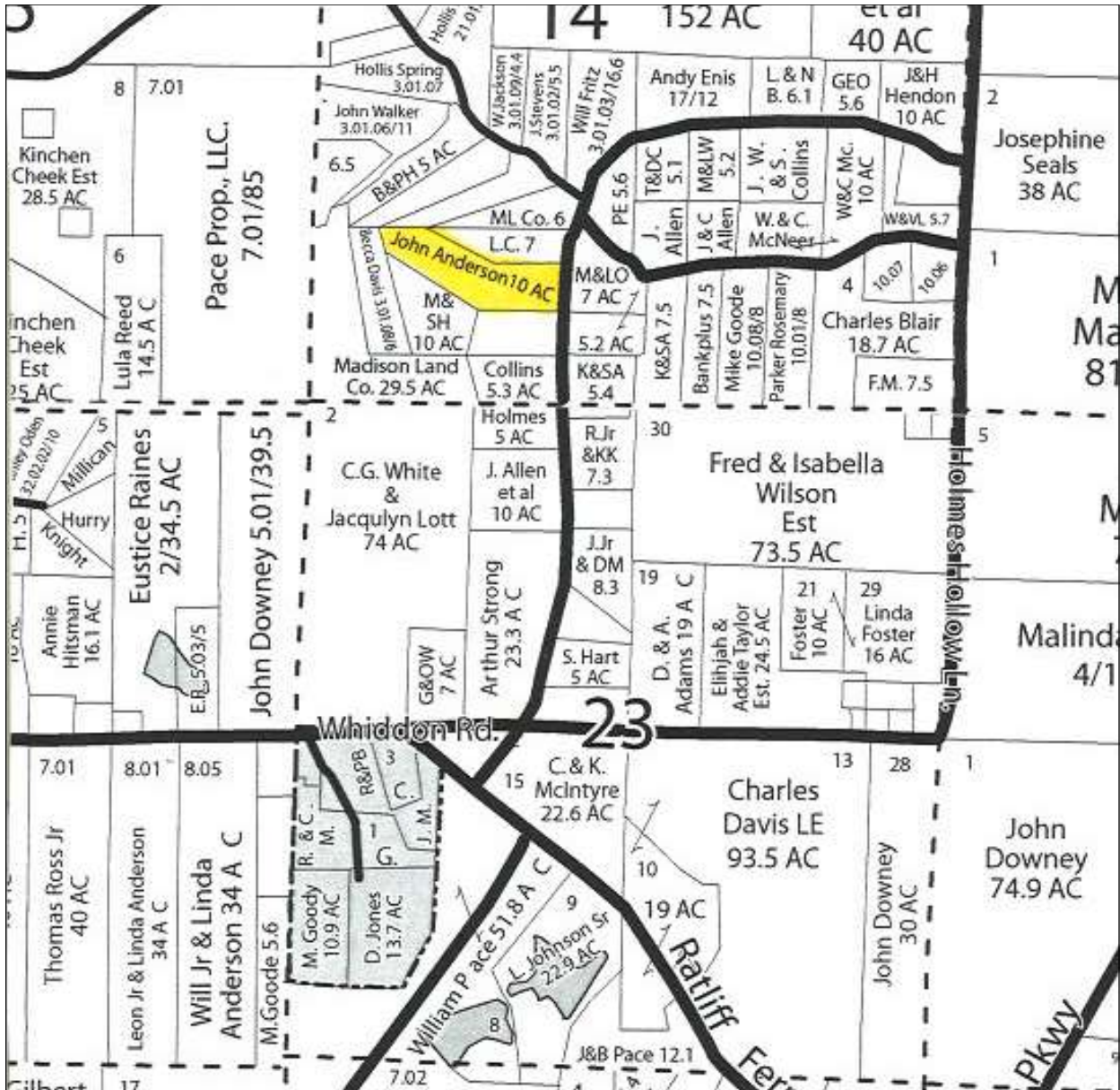


Information is Believed to be Accurate but not Guaranteed



Denman Ferguson
 601-214-6433
 4 Corner Properties, LLC
 Highway 51 Suite A
 Ridgeland, MS 39110





Ownership

Denman Ferguson
 601-214-6433
 4 Corner Properties, LLC
 Highway 51 Suite A
 Ridgeland, MS 39110
 denman@4cornerprop.com

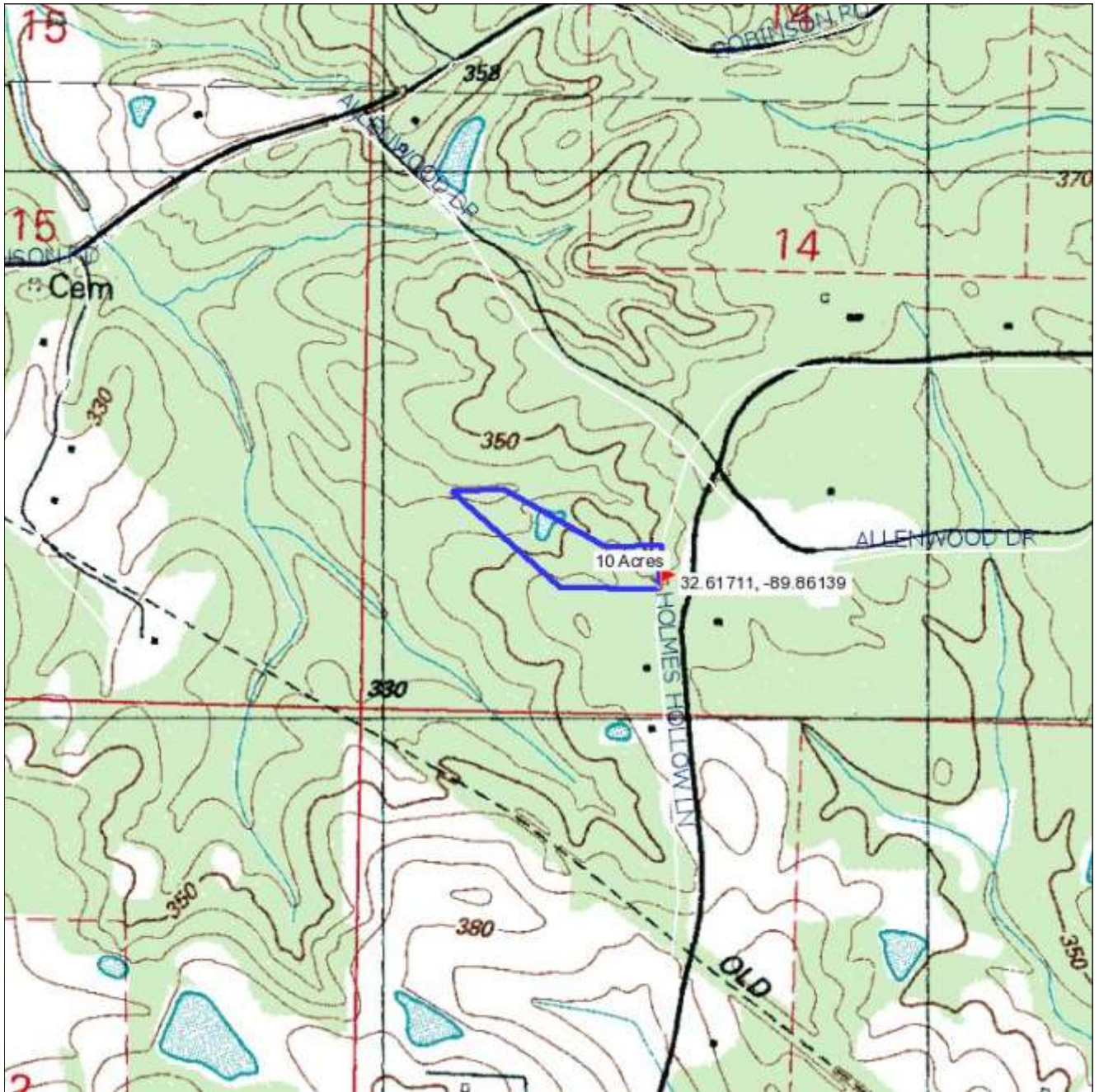




Aerial Photo



Denman Ferguson
601-214-6433
4 Corner Properties, LLC
Highway 51 Suite A
Ridgeland, MS 39110
denman@4cornerprop.com



Topo Map



Denman Ferguson
601-214-6433
4 Corner Properties, LLC
Highway 51 Suite A
Ridgeland, MS 39110
denman@4cornerprop.com



Directional Map

Directions: From Madison take the Natchez Trace Parkway and go east for 20.3 miles then make a left turn onto Ratliff Ferry Road, go 1 mile and make a slight right turn onto Holmes Hollow Road go for 1 mile look for sign property is on your left.



Denman Ferguson
601-214-6433
4 Corner Properties, LLC
Highway 51 Suite A
Ridgeland, MS 39110
denman@4cornerprop.com