

Denman Ferguson
601-214-6433
4 Corner Properties, LLC
577 Hwy 51 Suite A
Ridgeland, MS 39157
denman@4cornerprop.com



Cell: 601-214-6433
Office: 601-952-2828
Fax: 601-510-9446

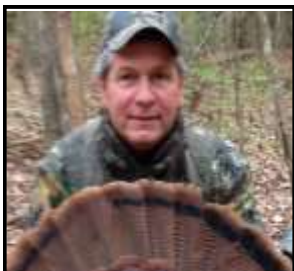
LEAKE COUNTY HUNTING / TIMBER TRACT *32.5 ACRES, LEAKE, COUNTY, MS*

- 32.5 Acre Hunting/ Timber Tract
- 60 Ft Deeded Easement to Land
- Large Pine Timber
- Great Timber Investment
- Small Pond on Property
- Borders Larger Timber Tracts
- Abundant Deer and Turkey
- Water Available at Road
- Power Available at Road
- Area Known for Big Deer



Leake County Hunting/ Timber Tract, This tract consists of large pine timber and 10" to 18" hardwood timber. Gently sloping terrain, small pond deer sign all over the wooded ridge tops. This would make a great small hunting tract or build a campsite beside the secluded pond. Call Denman Ferguson for your private showing today. 601-214-6433

Directions: From Hwy 429 and the Natchez Trace just East of Thomastown, go East on Hwy 429 for 1 mile, Then turn left onto Pleasant Grove Road, go 3.2 miles to stop sign, then turn left and then right to stay on Pleasant Grove Road, go .02 miles and property entrance is gravel road on the left. Property starts at big timber.



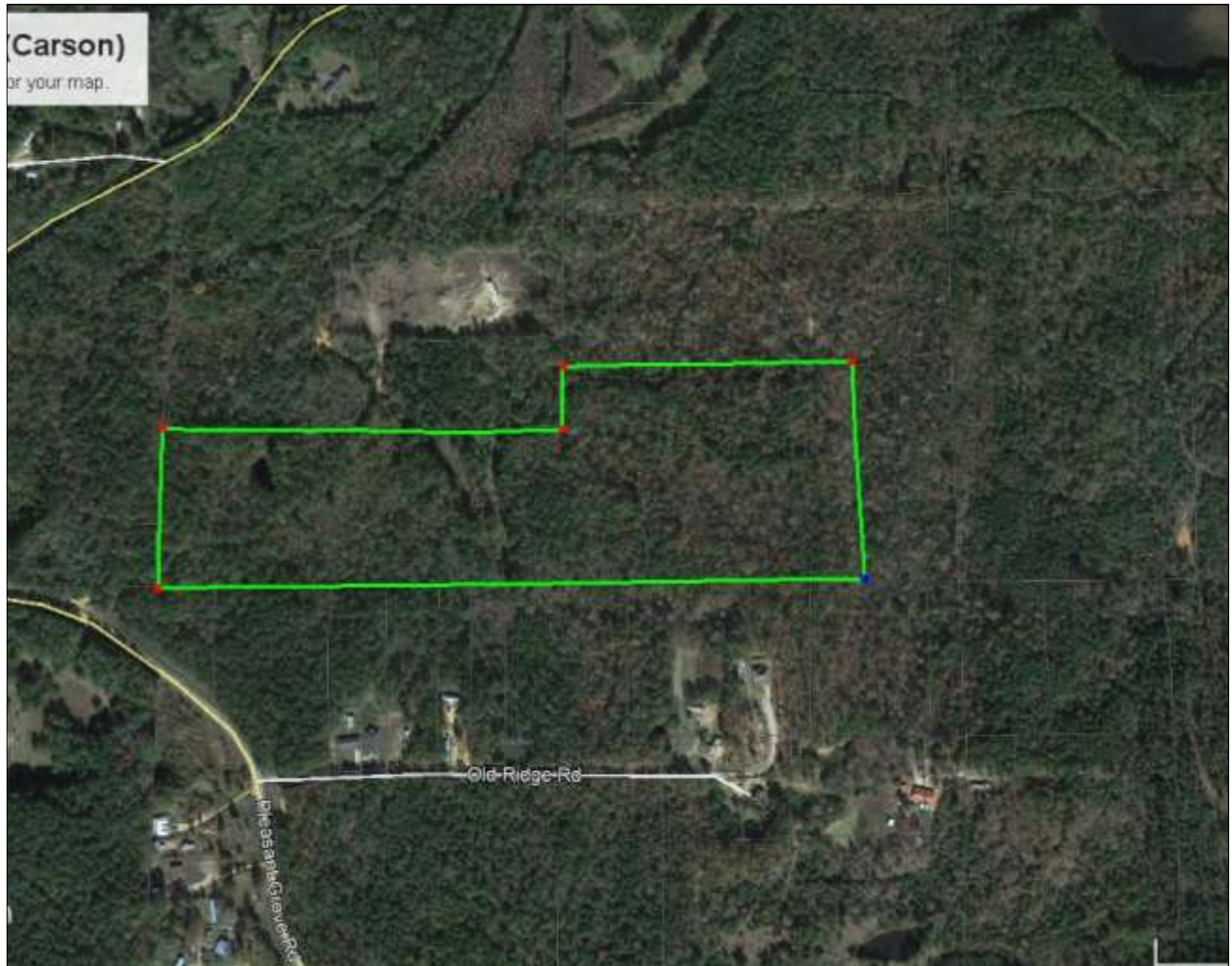
Denman Ferguson
601-214-6433
4 Corner Properties, LLC
577 Hwy 51 Suite A
Ridgeland, MS 39157
denman@4cornerprop.com





Denman Ferguson
601-214-6433
4 Corner Properties, LLC
577 Hwy 51 Suite A
Ridgeland, MS 39157
denman@4cornerprop.com

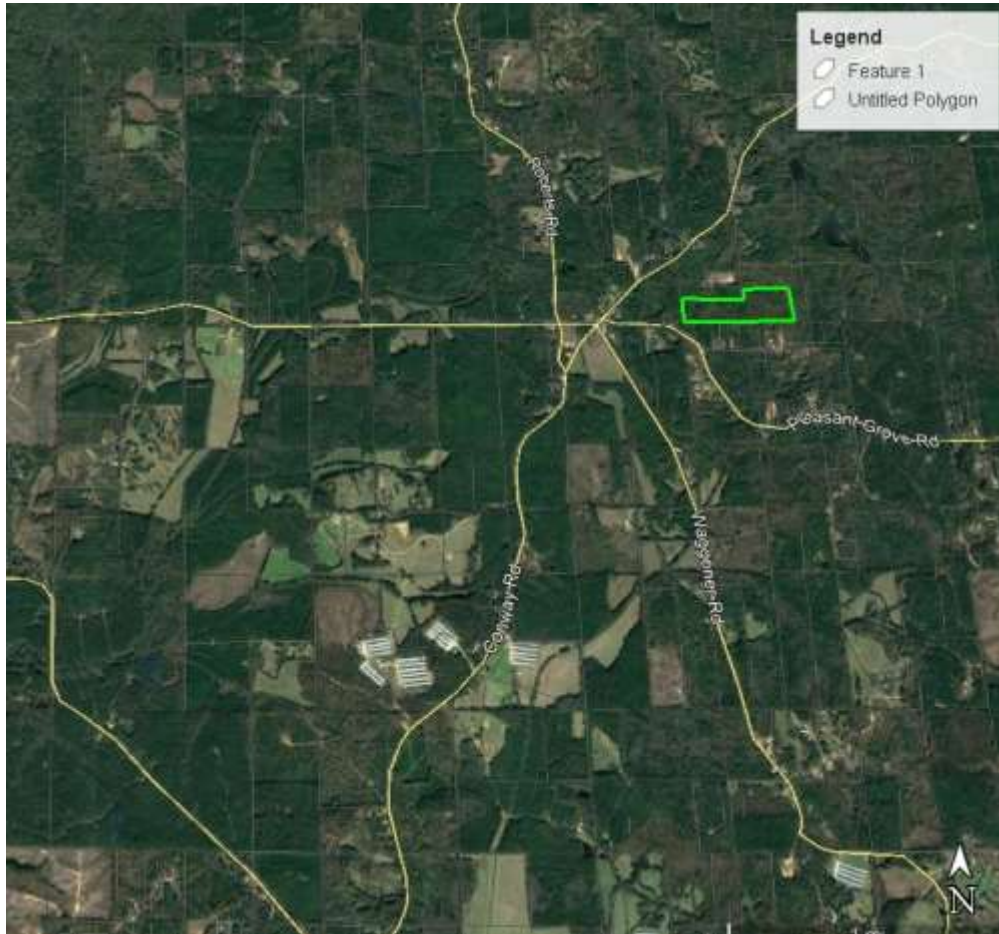




Aerial Photo



Denman Ferguson
601-214-6433
4 Corner Properties, LLC
577 Hwy 51 Suite A
Ridgeland, MS 39157
denman@4cornerprop.com



Directional Map

Directions: From Hwy 429 and Pleasant Grove Road just East of Thomastown, go East on Hwy 429 for 1 mile, Then turn left onto Pleasant Grove Road, go 3.2 miles to stop sign, then turn left and then right to stay on Pleasant Grove Road, go .02 miles and property entrance is gravel road on the left. Property starts at big timber.



Denman Ferguson
601-214-6433
4 Corner Properties, LLC
577 Hwy 51 Suite A
Ridgeland, MS 39157
denman@4cornerprop.com