

26.64 ACRES, PIKE COUNTY, MS

\$93,240



Recreational Tract

Deer and Turkey

Paved Road Frontage



Accessible to Utilities

Existing Food Plots

Excellent building site

26.64 acres of gently rolling pasture land or excellent pine plantation location. Has adequate recreational activity space and would make a beautiful home site. Just off MS Hwy 570, it is only minutes from Summit or McComb City. This site is only .4 mile off the highway on a hard surface road.

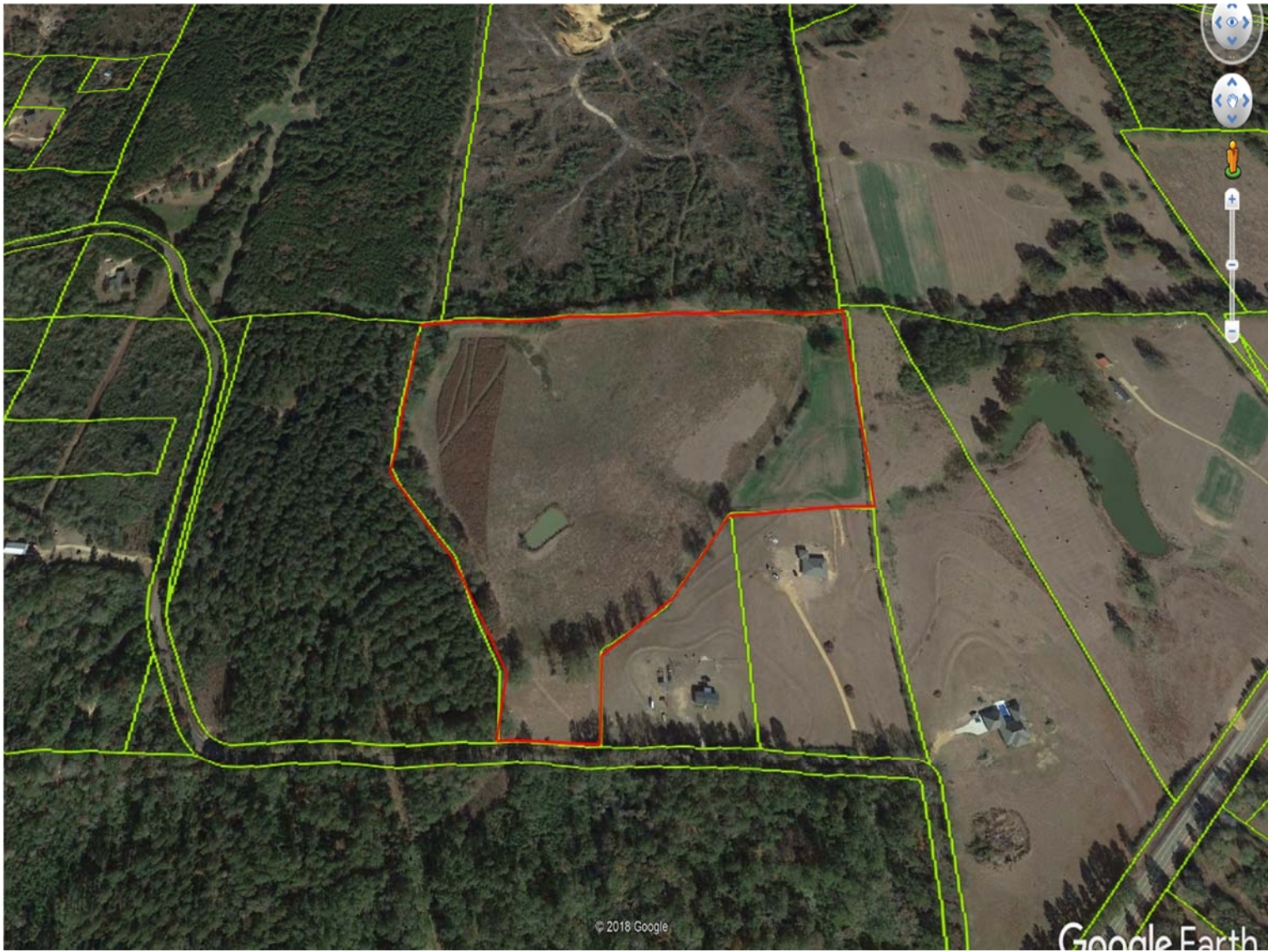


Charles Carruth
Associate Land Specialist
4 Corner Properties, LLC
77 Hwy 84 E
Brookhaven, MS 39601





PHOTOS



AERIAL PHOTO

MS-570, Mississippi

1000 Patterson Rd, Ruth, MS 39662

18 min

3 hr 26

1 hr

+

Leave now

18 min (11.4 miles)

Via MS-570 E

MS-570

Mississippi

↑ Head northwest on US-51 N/Hwy 51 N/Northwest St toward Cedar Ridge Rd

1 Continue to follow US-51 N/Hwy 51 N

1.7 mi

↘ Turn right onto Robb St

0.8 mi

↑ Continue onto Robb St E Exd

1.0 mi

↑ Continue onto MS-570 E

7.1 mi

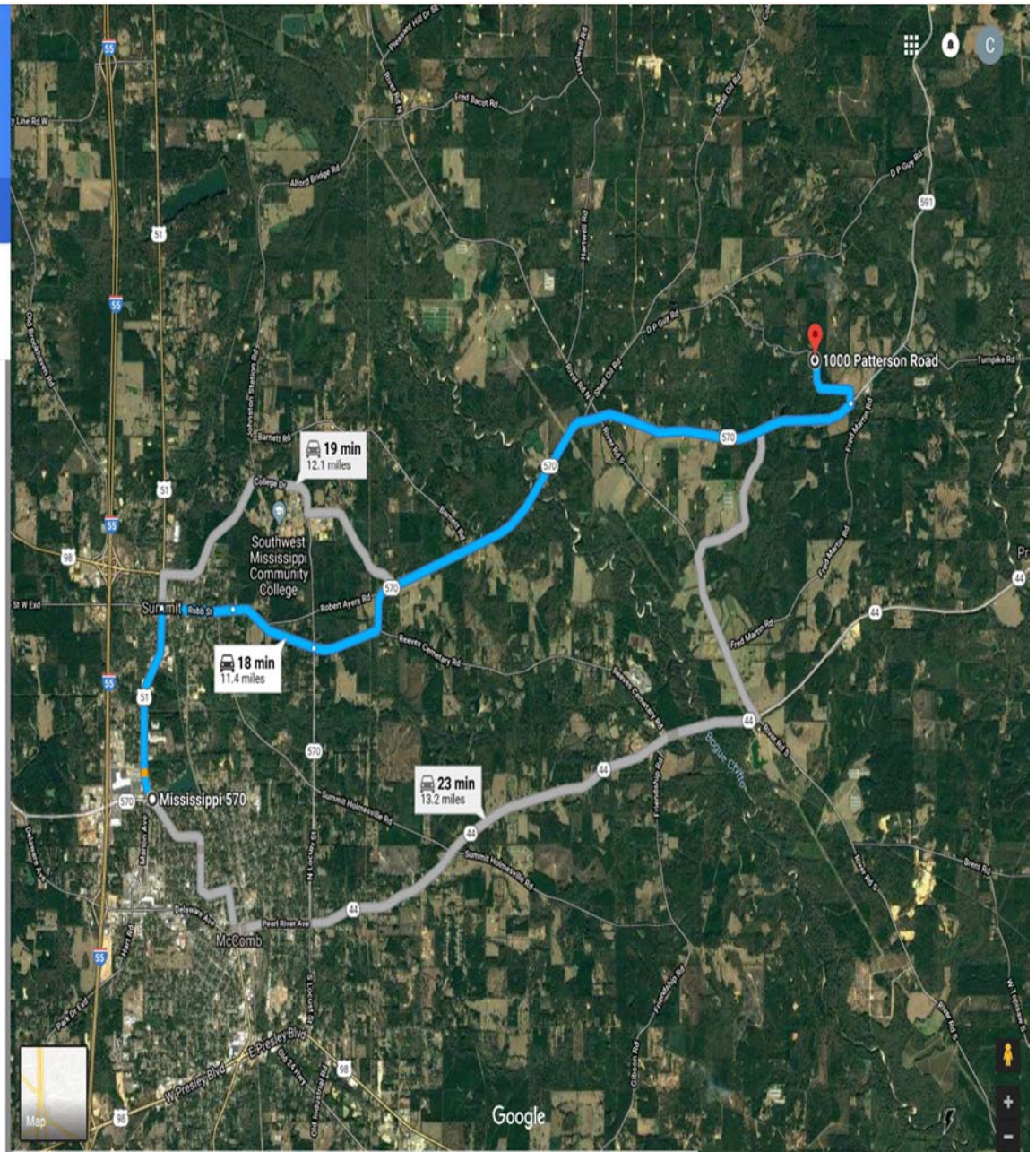
↶ Turn left onto Patterson Rd

0.7 mi

1000 Patterson Rd

Ruth, MS 39662

These directions are for planning purposes only. You may find that construction projects, traffic, weather, or other events may cause conditions to differ from the map results, and you should plan your route accordingly. You must obey all signs or notices regarding your route.



MAP